

Product datasheet for **TP327978L**

CDK6 (NM_001145306) Human Recombinant Protein

Product data:

Product Type:	Recombinant Proteins
Description:	Purified recombinant protein of Homo sapiens cyclin-dependent kinase 6 (CDK6), 1 mg
Species:	Human
Expression Host:	HEK293T
Expression cDNA Clone or AA Sequence:	>RC227978 protein sequence Red =Cloning site Green =Tags(s)

MEKDGLCRADQQYECVAEIGEGAYGKVKFARDLKNNGGRFVALKRVRVQTGEEGMPLSTIREVAVLRHLET
FEHPNVVRLFDVCTVSRTDRETKLTLVFEHVDQDLTTYLDKVPPEPGVPTETIKDMMFQLLRGLDFLHSHR
VHRDLKPQNILVTSSGQIKLADFGRLARIYSFQMALTSVVTLWYRAPEVLLQSSYATPVDLWSVGCIFA
EMFRRKPLFRGSSDQDLGKILDVIGLPGCEEDWPRDVALPRQAFHSKSAQPIEFVTDIDELGKDLLLKC
LTFNPAKRISAYSALSHPYFQDLERCKENLDShLPPSQNTSELNTA

TRTRPLEQKLISEEDLAANDILDYKDDDDKV

Tag:	C-Myc/DDK
Predicted MW:	36.8 kDa
Concentration:	>0.05 µg/µL as determined by microplate BCA method
Purity:	> 80% as determined by SDS-PAGE and Coomassie blue staining
Buffer:	25 mM Tris-HCl, 100 mM glycine, pH 7.3, 10% glycerol
Preparation:	Recombinant protein was captured through anti-DDK affinity column followed by conventional chromatography steps.
Note:	For testing in cell culture applications, please filter before use. Note that you may experience some loss of protein during the filtration process.
Storage:	Store at -80°C.
Stability:	Stable for 12 months from the date of receipt of the product under proper storage and handling conditions. Avoid repeated freeze-thaw cycles.
RefSeq:	<u>NP_001138778</u>
Locus ID:	1021



[View online »](#)

UniProt ID: [Q00534](#)

RefSeq Size: 11733

Cytogenetics: 7q21.2

RefSeq ORF: 978

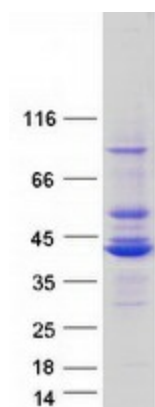
Synonyms: MCPH12; PLSTIRE

Summary: The protein encoded by this gene is a member of the CMGC family of serine/threonine protein kinases. This kinase is a catalytic subunit of the protein kinase complex that is important for cell cycle G1 phase progression and G1/S transition. The activity of this kinase first appears in mid-G1 phase, which is controlled by the regulatory subunits including D-type cyclins and members of INK4 family of CDK inhibitors. This kinase, as well as CDK4, has been shown to phosphorylate, and thus regulate the activity of, tumor suppressor protein Rb. Altered expression of this gene has been observed in multiple human cancers. A mutation in this gene resulting in reduced cell proliferation, and impaired cell motility and polarity, and has been identified in patients with primary microcephaly. [provided by RefSeq, Aug 2017]

Protein Families: Druggable Genome, Protein Kinase

Protein Pathways: Cell cycle, Chronic myeloid leukemia, Glioma, Melanoma, Non-small cell lung cancer, p53 signaling pathway, Pancreatic cancer, Pathways in cancer, Small cell lung cancer

Product images:



Coomassie blue staining of purified CDK6 protein (Cat# [TP327978]). The protein was produced from HEK293T cells transfected with CDK6 cDNA clone (Cat# [RC227978]) using MegaTran 2.0 (Cat# [TT210002]).