

## Product datasheet for **TP327950M**

### SAE1 (NM\_016402) Human Recombinant Protein

#### Product data:

Product Type:	Recombinant Proteins
Description:	Recombinant protein of human SUMO1 activating enzyme subunit 1 (SAE1), transcript variant 1, 100 µg
Species:	Human
Expression Host:	HEK293T
Expression cDNA Clone or AA Sequence:	>RC227950 protein sequence <b>Red</b> =Cloning site <b>Green</b> =Tags(s)

MVEKEEAGGGISEEEAAQYDRQIRLWGLEAQKRLRASRVLLVGLKGLGAEIAKNLILAGVKGLTMLDHEQ  
VTPEDPGAQFLIRTGSVGRNRAEASLERAQNLNPMVDVKVDTEIEKKPESFFTQFDAVCLTCCSRDVIV  
KVDQICHKNSIKFFTGDVFGYHGYTFANLGEHEFVEEKTKVAKVSQGVEDGPDTKRAKLDSSSETTMVKKK  
VVFPCVKEALEVDWSEKAKAALKRTTSDYFLLQVLLKFRDVKGRDPSSDYEEDSELLQIRNDVLDLSD  
GISPDLLPEDFVRYCFSEMAPVCAVGGILAQEIWKALSQRDPPHNNFFFDGMKGNNGIVECLGPK

**TR**TRPLEQKLISEEDLAANDILDYKDDDDKV

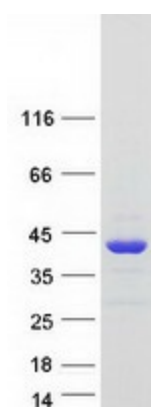
Tag:	C-Myc/DDK
Predicted MW:	38.2 kDa
Concentration:	>0.05 µg/µL as determined by microplate BCA method
Purity:	> 80% as determined by SDS-PAGE and Coomassie blue staining
Buffer:	25 mM Tris-HCl, 100 mM glycine, pH 7.3, 10% glycerol
Preparation:	Recombinant protein was captured through anti-DDK affinity column followed by conventional chromatography steps.
Note:	For testing in cell culture applications, please filter before use. Note that you may experience some loss of protein during the filtration process.
Storage:	Store at -80°C.
Stability:	Stable for 12 months from the date of receipt of the product under proper storage and handling conditions. Avoid repeated freeze-thaw cycles.
RefSeq:	<a href="#">NP_057486</a>
Locus ID:	10055



[View online »](#)

UniProt ID:	<a href="#">Q9UBE0</a>
RefSeq Size:	2538
Cytogenetics:	19q13.32
RefSeq ORF:	1038
Synonyms:	AOS1; FLJ3091; HSPC140; SUA1; UBLE1A
Summary:	Posttranslational modification of proteins by the addition of the small protein SUMO (see SUMO1; MIM 601912), or sumoylation, regulates protein structure and intracellular localization. SAE1 and UBA2 (MIM 613295) form a heterodimer that functions as a SUMO-activating enzyme for the sumoylation of proteins (Okuma et al., 1999 [PubMed 9920803]). [supplied by OMIM, Mar 2010]
Protein Pathways:	Ubiquitin mediated proteolysis

### Product images:



Coomassie blue staining of purified SAE1 protein (Cat# [TP327950]). The protein was produced from HEK293T cells transfected with SAE1 cDNA clone (Cat# [RC227950]) using MegaTran 2.0 (Cat# [TT210002]).