

Product datasheet for TP327943M

PTP kappa (PTPRK) (NM_001135648) Human Recombinant Protein

Product data:

| | |
|---------------------------------------|---|
| Product Type: | Recombinant Proteins |
| Description: | Recombinant protein of human protein tyrosine phosphatase, receptor type, K (PTPRK), transcript variant 1, 100 µg |
| Species: | Human |
| Expression Host: | HEK293T |
| Expression cDNA Clone or AA Sequence: | >RC227943 representing NM_001135648 Red=Cloning site Green=Tags(s) |

MDTTAAAALPAFVALLLLSPWPLLGSAQGQFSAGGCTFDDGPGACDYHQDLYDDFEWVHVSAQEPHYLPP
EMPQGSYMIVDSSDHPGKARLQLPTMKENDTHCIDFSYLLYSQKGLNPGTLNILVRVKNKGPLANPIWN
VTGFTGRDWLRAELAVSTFWPNEYQVIFEAEVSGGRSGYIAIDDIQVLSYPCDKSPHFLRLGDVEVNAGQ
NATFQCIATGRDAVHNKLWLQRRNGEDIPVAQTKNINHRRFAASFRLQEVTKTDQDLYRCVTQSERGSGV
SNFAQLIVREPPRIAPPQLLGVGPTYLLIQLNANSIIGDGPILKEVEYRMTSGSWTETHAVNAPTYKL
WHLDPDTEYEIRVLLTRPGEGGTGLPGPPLITRTKCAEPMRTPKTLKIAEIQARRIAVDWESLGYNITRC
HTFNVTICYHYFRGHNESKADCLDMDPKAPQHVVNHLPPYTNVSLKMILTNPPEGRKESEETIIQTDDEDVP
GPVPVKSQGTSFENKIFLNWKEPLDPNGIITQYEISYSSIRSFDPAPVPVAGPPQTVSNLWNSTHHVFMH
LHPGTTYQFFIRASTVKGFPGATAINVTTNISAPTLPDYEGVDASLNETATTITVLLRPAQAKGAPISAY
QIIVVEELHPHRTKREAGAMECYQVPVYQNAMSGGAPYFAAELPPGNLPEPAPFTVGDNRTYQGFWNPP
LAPRKGNYIFQAMSSVEKETKTQCVRIATKAAATEEPEVIPDPAKQTDREVVKIAGISAGILVFILLLV
VILIVKSKLAKKRKDAMGNTRQEMTHMVNAMDRSYADQSTLHAEDPLSITFMDQHNFSPRYENHSATAE
SSRLLDVPRYLCEGTESPYQTGQLHPAIRVADLLQHINLMKTSDSYGFKEEYESFFEGQSASWDVAKKDQ
NRAKNRYGNIIAYDHSRVLQPVEDDPSSDIYINANYIDIWLYRDGYQRPSHYIATQGPVHETVYDFWRMI
WQEQSACIVMVTNLVEVGRVKCYKYWPDDTEVYGDVKVTCVEMEPLAEYVVRTFTLERRGYNEIREVKQF
HFTGWPDHGVPHYHATGLLSFIRRVKLSNPPSAGPIVVHCSAGAGRTGCYIVIDIMLDMAEREGVVDIYNC
VKALRSRRINMVQTEEQYIFIHDAILEACLCGETAIPVCFKAAYFDMIRIDSQTNSSHLKDEFQTLNSV
TPRLQAEDCSIACLPRNHDKNRFMDMLPPDRCLPFLITIDGESSNYINAALMDSYRQPAAFIVTQYPLPN
TVKDFWRLVYDYGCTSIVMLNEVDLSQGCPQYWPEEGMLRYGPIQVECMSCSMDCDVINRIFRICNLTRP
QEGYLMVQQFQYLGWASHREVPGSKRSFLKILQVEKWQEECEEGERGRTIHCNNGGGRSGMFCAIGIV
EMVKRQNVVDVFHAVKTLRNSKPNMVEAPEQYRFCYDVALEYLESS

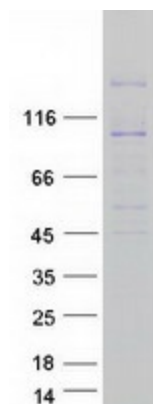
SGPTRRRLEQKLISEEDLAANDILDYKDDDDKV

Tag: C-Myc/DDK



[View online »](#)

| | |
|--------------------------|---|
| Predicted MW: | 160.3 kDa |
| Concentration: | >0.05 µg/µL as determined by microplate BCA method |
| Purity: | > 80% as determined by SDS-PAGE and Coomassie blue staining |
| Buffer: | 25 mM Tris-HCl, 100 mM glycine, pH 7.3, 10% glycerol |
| Preparation: | Recombinant protein was captured through anti-DDK affinity column followed by conventional chromatography steps. |
| Note: | For testing in cell culture applications, please filter before use. Note that you may experience some loss of protein during the filtration process. |
| Storage: | Store at -80°C. |
| Stability: | Stable for 12 months from the date of receipt of the product under proper storage and handling conditions. Avoid repeated freeze-thaw cycles. |
| RefSeq: | NP_001129120 |
| Locus ID: | 5796 |
| UniProt ID: | Q15262 |
| Cytogenetics: | 6q22.33 |
| RefSeq ORF: | 4338 |
| Synonyms: | R-PTP-kappa |
| Summary: | <p>The protein encoded by this gene is a member of the protein tyrosine phosphatase (PTP) family. PTPs are known to be signaling molecules that regulate a variety of cellular processes including cell growth, differentiation, mitotic cycle, and oncogenic transformation. This PTP possesses an extracellular region, a single transmembrane region, and two tandem catalytic domains, and thus represents a receptor-type PTP. The extracellular region contains a meprin-A5 antigen-PTP mu (MAM) domain, an Ig-like domain and four fibronectin type III-like repeats. This PTP was shown to mediate homophilic intercellular interaction, possibly through the interaction with beta- and gamma-catenin at adherens junctions. Expression of this gene was found to be stimulated by TGF-beta 1, which may be important for the inhibition of keratinocyte proliferation. [provided by RefSeq, Jul 2008]</p> |
| Protein Families: | Druggable Genome, Phosphatase, Transmembrane |

Product images:

Coomassie blue staining of purified PTPRK protein (Cat# [TP327943]). The protein was produced from HEK293T cells transfected with PTPRK cDNA clone (Cat# [RC227943]) using MegaTran 2.0 (Cat# [TT210002]).