

Product datasheet for **TP327933M**

PLS1 (NM_001145319) Human Recombinant Protein

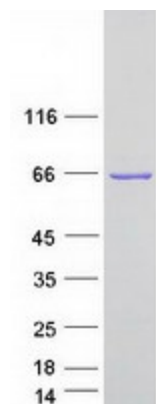
Product data:

Product Type:	Recombinant Proteins
Description:	Recombinant protein of human plastin 1 (I isoform) (PLS1), transcript variant 1, 100 µg
Species:	Human
Expression Host:	HEK293T
Expression cDNA Clone or AA Sequence:	>RC227933 protein sequence Red =Cloning site Green =Tags(s) MENSTTTISREELEELQEAFNKIDIDNSGYVSDYELQDLFKEASLPLPGYKVREIVEKILSVADSNKDGK ISFEFVSLMQELKSKDISKTFRKIINKREGITAIGGTSTISSEGTQHSYSEEEKVAFVNWINKALENDP DCKHLIPMNPNDDSLFLKSLADGILLCKMINLSEPTIDERAINKKKLTPFTISENLNLALNSASAIGCTV VNIGASDLKEGKPHLVLLWQIIKVLGFADIEISRNEALIALLEGELEEELMKLSPEELLRWVNYHL TNAGWHTISNFSQDIKDSRAYFHLLNQIAPKGGEDGPAIAIDLSGINETNDLKRAGLMLQEADKLGCKQF VTPADVSGNPKLNLAFAVNLFTYPCCLKPNNNDIDMNLLEGESKEERTFRNWMNSLGVNPNYINHLYS D LADALVIFQLYEMIRVPVNWRHVNKPPYPALGGNMKKIENCNYAVELGKNKAKFSLVGIAGQDLNEGNST LTLALVWQLMRRYTLNVLSDLGEGEKVNDIIEIKWVNQTLKSANKKTSISSFKDKSISTSLPVLDLIDAI APNAVRQEMIRRENLSDEDKLNNAKYAISVARKIGARIYALPDDLVEVKPKMVMVTVFACLMGKGLNRIK TR TRPLEQKLISEEDLAANDILDYKDDDDKV
Tag:	C-Myc/DDK
Predicted MW:	70.1 kDa
Concentration:	>0.05 µg/µL as determined by microplate BCA method
Purity:	> 80% as determined by SDS-PAGE and Coomassie blue staining
Buffer:	25 mM Tris-HCl, 100 mM glycine, pH 7.3, 10% glycerol
Preparation:	Recombinant protein was captured through anti-DDK affinity column followed by conventional chromatography steps.
Note:	For testing in cell culture applications, please filter before use. Note that you may experience some loss of protein during the filtration process.
Storage:	Store at -80°C.


[View online »](#)

Stability:	Stable for 12 months from the date of receipt of the product under proper storage and handling conditions. Avoid repeated freeze-thaw cycles.
RefSeq:	<u>NP_001138791</u>
Locus ID:	5357
UniProt ID:	<u>Q14651</u>
RefSeq Size:	3720
Cytogenetics:	3q23
RefSeq ORF:	1887
Synonyms:	DFNA76
Summary:	Plastins are a family of actin-binding proteins that are conserved throughout eukaryote evolution and expressed in most tissues of higher eukaryotes. In humans, two ubiquitous plastin isoforms (L and T) have been identified. The protein encoded by this gene is a third distinct plastin isoform, which is specifically expressed at high levels in the small intestine. Alternatively spliced transcript variants varying in the 5' UTR, but encoding the same protein, have been found for this gene. A pseudogene of this gene is found on chromosome 11. [provided by RefSeq, Feb 2010]

Product images:



Coomassie blue staining of purified PLS1 protein (Cat# [TP327933]). The protein was produced from HEK293T cells transfected with PLS1 cDNA clone (Cat# [RC227933]) using MegaTran 2.0 (Cat# [TT210002]).