

## Product datasheet for TP327926M

### MTFR1 (NM\_001145838) Human Recombinant Protein

#### Product data:

Product Type:	Recombinant Proteins
Description:	Purified recombinant protein of Homo sapiens mitochondrial fission regulator 1 (MTFR1), nuclear gene encoding mitochondrial protein, transcript variant 2, 100 µg
Species:	Human
Expression Host:	HEK293T
Expression cDNA Clone or AA Sequence:	>RC227926 representing NM_001145838 <b>Red</b> =Cloning site <b>Green</b> =Tags(s)
	MLGWIKRLIRMVFQVGVSMQSIINSHATEWSPSHPGEDAVASFADVGWVAKKEEGECSARLRTEVRSRPPL QDDLFFFEKAPSRQISLPDLSQEELKTPALANEEALQKICALENELAALRAQIAKIVTQQEQNLTAG DLDSTTFGTIPPHPPPPPPPLPPALGLHQSTSAVDLKERREKRANAGKTLVKNNPKPEMPNMLEILK EMNSVKLRSVKRSEQDVKPKPVDATDPAALIAEALKKKFAYRYRSDSQDEVEKGIPKSESEATSERVLF PHMLKPTGKMKALIENVS
	<b>TR</b> TRPLEQKLISEEDLAANDILDYKDDDDKV
Tag:	C-Myc/DDK
Predicted MW:	33 kDa
Concentration:	>0.05 µg/µL as determined by microplate BCA method
Purity:	> 80% as determined by SDS-PAGE and Coomassie blue staining
Buffer:	25 mM Tris-HCl, 100 mM glycine, pH 7.3, 10% glycerol
Preparation:	Recombinant protein was captured through anti-DDK affinity column followed by conventional chromatography steps.
Note:	For testing in cell culture applications, please filter before use. Note that you may experience some loss of protein during the filtration process.
Storage:	Store at -80°C.
Stability:	Stable for 12 months from the date of receipt of the product under proper storage and handling conditions. Avoid repeated freeze-thaw cycles.
RefSeq:	<u><a href="#">NP_001139310</a></u>
Locus ID:	9650



[View online »](#)

UniProt ID: [Q15390](#)

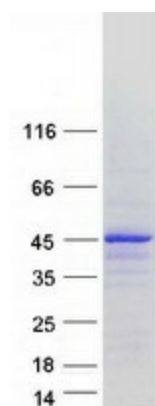
Cytogenetics: 8q13.1

RefSeq ORF: 900

Synonyms: CHPPR; FAM54A2

**Summary:** This gene encodes a mitochondrial protein that is characterized by a poly-proline rich region. A chicken homolog of this protein promotes mitochondrial fission and the mouse homolog protects cells from oxidative stress. A related pseudogene of this gene is found on chromosome X. [provided by RefSeq, Mar 2009]

### Product images:



Coomassie blue staining of purified MTFR1 protein (Cat# [TP327926]). The protein was produced from HEK293T cells transfected with MTFR1 cDNA clone (Cat# [RC227926]) using MegaTran 2.0 (Cat# [TT210002]).