

Product datasheet for TP327881M

SH2B1 (NM_001145795) Human Recombinant Protein

Product data:

Product Type:	Recombinant Proteins
Description:	Recombinant protein of human SH2B adaptor protein 1 (SH2B1), transcript variant 1, 100 µg
Species:	Human
Expression Host:	HEK293T
Expression cDNA	>RC227881 representing NM_001145795
Clone or AA Sequence:	Red=Cloning site Green=Tags(s)

MNGAPSPEDGASPSSPLPPPPPSWREFCESHARAAAALDFARRFRLYLASHPQYAGPGAEAAFSRRFAE
LFLQHFEAEVARASGSLSPILAPLSPGAEISPHDLSLESCRVGGPLAVLGPSSSEDLAGPLPSSVSSS
STTSSKPKLKKRFSLSVGRSVRGSVRGILQWRGTVDPPSSAGPLETSSGPPVLGGNSNSNSSGGAGTVG
RGLVSDGTSPGERWTHRFERLRLSRGGGALKDGAGMVQRELLSFMGAEAAAPDPAGVGRGGVAGPPSG
GGGQPQWQKCRLLLRSEGE GGGSRLEFFVPPKASRPRLSIPCSSITDVRTTTALEMPDRENTFVVKVEG
PSEYIMETVDAQHVKAWSVDIQECLSPGPCPATSPRPMTLPLAPGTSFLTRENTDSELSCLNHSESLPS
QDLLLGPSESNDRLSQGAYGGLSDRPSASISPPSSASIAASHFDSMELLPELPPRIPIIEGPPTGTVHPL
SAPYPLDTPETATGSFLFQGEPEGGEDQPLSGYPWFHGMLSRLKAAQLVLTGGTGS HGVFLVRQSETR
RGEYVLT FNFQ GKAKHLRLSLNEEGQCRVQHLWFQSIFDMLEHFRVHPIPLESGSSDVLVSYVPSSQR
QQEPTTSHDPPQPPEPPSWTDPQP GAE EASRAPEVA AAAAAAAAAAKERQEKEKAGGGGVPEELVPVVELVP
VVELEEAIAPGSEAQGAGSGGDAGVPPMVQLQQSPLGGDGEEGGHPRAINNQYSFV

TRTRPLEQKLISEEDLAANDILDYKDDDDKV

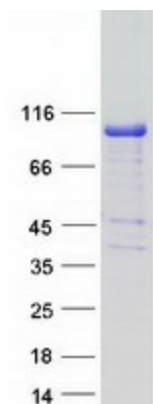
Tag:	C-Myc/DDK
Predicted MW:	79.2 kDa
Concentration:	>0.05 µg/µL as determined by microplate BCA method
Purity:	> 80% as determined by SDS-PAGE and Coomassie blue staining
Buffer:	25 mM Tris-HCl, 100 mM glycine, pH 7.3, 10% glycerol
Preparation:	Recombinant protein was captured through anti-DDK affinity column followed by conventional chromatography steps.
Note:	For testing in cell culture applications, please filter before use. Note that you may experience some loss of protein during the filtration process.
Storage:	Store at -80°C.



[View online »](#)

Stability:	Stable for 12 months from the date of receipt of the product under proper storage and handling conditions. Avoid repeated freeze-thaw cycles.
RefSeq:	NP_001139267
Locus ID:	25970
UniProt ID:	Q9NRF2 , A0A024QZD2 , B4DLN5 , B3KNV5
Cytogenetics:	16p11.2
RefSeq ORF:	2268
Synonyms:	PSM; SH2B
Summary:	This gene encodes a member of the SH2-domain containing mediators family. The encoded protein mediates activation of various kinases and may function in cytokine and growth factor receptor signaling and cellular transformation. Alternatively spliced transcript variants have been described. [provided by RefSeq, Mar 2009]
Protein Pathways:	Neurotrophin signaling pathway

Product images:



Coomassie blue staining of purified SH2B1 protein (Cat# [TP327881]). The protein was produced from HEK293T cells transfected with SH2B1 cDNA clone (Cat# [RC227881]) using MegaTran 2.0 (Cat# [TT210002]).