

Product datasheet for TP327856L

beta COP (COPB1) (NM_001144061) Human Recombinant Protein

Product data:

Product Type:	Recombinant Proteins
Description:	Recombinant protein of human coatomer protein complex, subunit beta 1 (COPB1), transcript variant 2, 1 mg
Species:	Human
Expression Host:	HEK293T
Expression cDNA Clone or AA Sequence:	>RC227856 protein sequence Red=Cloning site Green=Tags(s)

MTAAENVCYTLINVPMDSEPPSEISLKNLDLEKGDVKSKEALKKVIIMILNGEKLPGLLMTIIRFVLP
DHTIKKLLLVFWEIVPKTTPDGRLLEHMLVCDAYRKDLQHPNEFIRGSTLRFLCKLKEALLEPLMPAI
RACLEHRHSYVRRNAVLAIYTIYRNFEHLIPDAPELIHDFLVNEKDASCKRNAFMMLIHADQDRALDYLS
TCIDQVQTFGDILQLVIVELIYKVCCHANPSEARFIRCIYNLLQSSSPAVKYEAAGTLVTLSSAPTAIKA
AAQCYIDLIIKESDNNVKLIVLDRLIELKEHPAHERVLQDLVMDILRVLSTPDLEVRKKTLLQALDLVSS
RNVEELVIVLKKKEVIKTNNVSEHEDTDKYRQLLVRTLHSCSVRFPDMAANVIPVLMFELSDNNEAAAADV
LEFVREAIQRFDNLRMLIVEKMLEVFHAIKSVKIYRGALWILGEYCSTKEDIQSVMTERRSLGEIPIVE
SEIKKEAGELKPEEEITVGPVQKLVTEMGTATQSALSSSRPTKKEEDRPPLRGFLLDGDFVVAASLATT
LTKIALRYVALVQEKKQNSFVAEAMLLMATILHLGKSSLPKPKITDDDVDRLSCLKVLSECSPLMNDI
FNKECRQSLSHMLSAKLEEEKLSQKKESEKRNVTVPDDPISFMQLTAKNEMNCKEDQFQLSLLAAMGNT
QRKEAADPLASKLNKVTQLTGFSDPVYAEAYVHVNYQDIVLDVLLVNQTSDTLQNLCTLELATLGDLLKVE
KPSPLTLAPHDFANIKANVKVASTENGIIFGNIVYDVSGAASDRNCVLSDIHIDIMDYIQPATCTDAEF
RQMWAEFEWENKVTNTNMVDLNDYLQHILKSTNMKCLTPEKALSGYCGFMAANLYARSIFGEDALANVS
IEKPIHQGPDAAVTGHIRIRAKSQGMALSLGDKINLSQKKTSI

TRTRPLEQKLISEEDLAANDILDYKDDDDKV

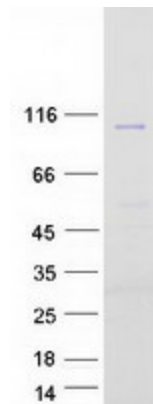
Tag:	C-Myc/DDK
Predicted MW:	107 kDa
Concentration:	>0.05 µg/µL as determined by microplate BCA method
Purity:	> 80% as determined by SDS-PAGE and Coomassie blue staining
Buffer:	25 mM Tris-HCl, 100 mM glycine, pH 7.3, 10% glycerol



[View online »](#)

Preparation:	Recombinant protein was captured through anti-DDK affinity column followed by conventional chromatography steps.
Note:	For testing in cell culture applications, please filter before use. Note that you may experience some loss of protein during the filtration process.
Storage:	Store at -80°C.
Stability:	Stable for 12 months from the date of receipt of the product under proper storage and handling conditions. Avoid repeated freeze-thaw cycles.
RefSeq:	NP_001137533
Locus ID:	1315
UniProt ID:	P53618
RefSeq Size:	3429
Cytogenetics:	11p15.2
RefSeq ORF:	2859
Synonyms:	BARMACS; COPB
Summary:	This gene encodes a protein subunit of the coatamer complex associated with non-clathrin coated vesicles. The coatamer complex, also known as the coat protein complex 1, forms in the cytoplasm and is recruited to the Golgi by activated guanosine triphosphatases. Once at the Golgi membrane, the coatamer complex may assist in the movement of protein and lipid components back to the endoplasmic reticulum. Alternatively spliced transcript variants have been described. [provided by RefSeq, Jan 2009]

Product images:



Coomassie blue staining of purified COPB1 protein (Cat# [TP327856]). The protein was produced from HEK293T cells transfected with COPB1 cDNA clone (Cat# [RC227856]) using MegaTran 2.0 (Cat# [TT210002]).