

## Product datasheet for TP327856

### beta COP (COPB1) (NM\_001144061) Human Recombinant Protein

#### Product data:

Product Type:	Recombinant Proteins
Description:	Recombinant protein of human coatomer protein complex, subunit beta 1 (COPB1), transcript variant 2, 20 µg
Species:	Human
Expression Host:	HEK293T
Expression cDNA Clone or AA Sequence:	>RC227856 protein sequence Red=Cloning site Green=Tags(s)

MTAAENVCYTLINVPMDSEPPSEISLKNLDLEKGDVKSKEALKKVIIMILNGEKLPGLLMTIIRFVLP  
DHTIKKLLLVFWEIVPKTTPDGRLLEHMLVCDAYRKDLQHPNEFIRGSTLRFLCKLKEALLEPLMPAI  
RACLEHRHSYVRRNAVLAIYTIYRNFEHLIPDAPELIHDFLVNEKDASCKRNAFMMLIHADQDRALDYLS  
TCIDQVQTFGDILQLVIVELIYKVCCHANPSEARFIRCIYNLLQSSSPAVKYEAAGTLVTLSSAPTAIKA  
AAQCYIDLIIKESDNNVKLIVLDRLIELKEHPAHERVLQDLVMDILRVLSTPDLEVRKKTLLQALDLVSS  
RNVEELVIVLKKVEIKTNNVSEHEDTDKYRQLLVRTLHSCSVRFPDMAANVIPVLMFELSDNNEAAAADV  
LEFVREAIQRFDNLRMLIVEKMLEVFHAIKSVKIYRGALWILGEYCSTKEDIQSVMTIIRSLGEIPIVE  
SEIKKEAGELKPEEEITVGPVQKLVTEMGTATQSALSSSRPTKKEEDRPPLRGFLLDGDFVVAASLATT  
LTKIALRYVALVQEKKQNSFVAEAMLLMATILHLGKSSLPKPKITDDDVDRLSCLKVLSECSPLMNDI  
FNKECRQSLSHMLSAKLEEEKLSQKKESEKRNVTVPDDPISFMQLTAKNEMNCKEDQFQLSLLAAMGNT  
QRKEAADPLASKLNKVTQLTGFSDPVYAEAYVHVNYQDIVLDVLLVNQTSDTLQNCTLELATLGDCLKLVE  
KPSPLTLAPHDFANIKANVKVASTENGIIFGNIVYDVSGAASDRNCVLSDIHIDIMDYIQPATCTDAEF  
RQMWAEFEWENKVTVNTNMVDLNDYLQHILKSTNMKCLTPEKALSGYCGFMAANLYARSIFGEDALANVS  
IEKPIHQGPDAAVTGHIRIRAKSQGMALSLGDKINLSQKKTISI

TRTRPLEQKLISEEDLAANDILDYKDDDDKV

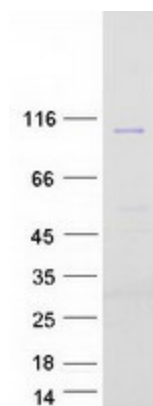
Tag:	C-Myc/DDK
Predicted MW:	107 kDa
Concentration:	>0.05 µg/µL as determined by microplate BCA method
Purity:	> 80% as determined by SDS-PAGE and Coomassie blue staining
Buffer:	25 mM Tris-HCl, 100 mM glycine, pH 7.3, 10% glycerol



[View online »](#)

<b>Preparation:</b>	Recombinant protein was captured through anti-DDK affinity column followed by conventional chromatography steps.
<b>Note:</b>	For testing in cell culture applications, please filter before use. Note that you may experience some loss of protein during the filtration process.
<b>Storage:</b>	Store at -80°C.
<b>Stability:</b>	Stable for 12 months from the date of receipt of the product under proper storage and handling conditions. Avoid repeated freeze-thaw cycles.
<b>RefSeq:</b>	<a href="#">NP_001137533</a>
<b>Locus ID:</b>	1315
<b>UniProt ID:</b>	<a href="#">P53618</a>
<b>RefSeq Size:</b>	3429
<b>Cytogenetics:</b>	11p15.2
<b>RefSeq ORF:</b>	2859
<b>Synonyms:</b>	BARMACS; COPB
<b>Summary:</b>	This gene encodes a protein subunit of the coatamer complex associated with non-clathrin coated vesicles. The coatamer complex, also known as the coat protein complex 1, forms in the cytoplasm and is recruited to the Golgi by activated guanosine triphosphatases. Once at the Golgi membrane, the coatamer complex may assist in the movement of protein and lipid components back to the endoplasmic reticulum. Alternatively spliced transcript variants have been described. [provided by RefSeq, Jan 2009]

### Product images:



Coomassie blue staining of purified COPB1 protein (Cat# TP327856). The protein was produced from HEK293T cells transfected with COPB1 cDNA clone (Cat# [RC227856]) using MegaTran 2.0 (Cat# [TT210002]).