

## Product datasheet for TP327825M

### ALS2CR1 (NIF3L1) (NM\_001142355) Human Recombinant Protein

#### Product data:

|                                       |  |
|---------------------------------------|--|
| Product Type:                         | Recombinant Proteins   |
| Description:                          | Recombinant protein of human NIF3 NGG1 interacting factor 3-like 1 (S. pombe) (NIF3L1), transcript variant 3, 100 µg |
| Species:                              | Human  |
| Expression Host:                      | HEK293T  |
| Expression cDNA Clone or AA Sequence: | >RC227825 protein sequence<br>Red=Cloning site Green=Tags(s)   |

MLSSCVRPVPTTVRFVDSLICNSSRSFMDLKALLSSLNDFASLSFAESWDNVGLLVEPSPHTVNTLFLT  
NDLTEEVMEVLQKKADLILSYHPIFRPMKRITWNTWKERLVIRALENRVGIYSPHTAYDAAPQGVNNW  
LAKGLGACTSRPIHPSKAPNYPTEGNHRVEFVNYTQDLQVMSAVKIDGVSVTSFSARTGNEEQTRIN  
LNCTQKALMQVDFLSRNKQLYQKTEILSLEKPLLLHTGMGRCLTLDVSLATMIDRIKRHLKLSHIRL  
ALGVGRTLESQVKVVALCAGSGSSVLQGVADLYLTGEMSHHDTLDAASQGINVILCEHSNTERGFLSDL  
RDMLDSHLENKINIILSETDRDPLQV

TRTRPLEQKLISEEDLAANDILDYKDDDDKV

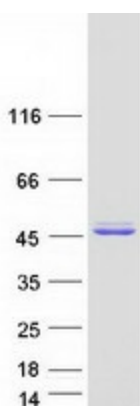
|                |  |
|----------------|--|
| Tag:           | C-Myc/DDK  |
| Predicted MW:  | 38.8 kDa   |
| Concentration: | >0.05 µg/µL as determined by microplate BCA method   |
| Purity:        | > 80% as determined by SDS-PAGE and Coomassie blue staining  |
| Buffer:        | 25 mM Tris-HCl, 100 mM glycine, pH 7.3, 10% glycerol   |
| Preparation:   | Recombinant protein was captured through anti-DDK affinity column followed by conventional chromatography steps.                                     |
| Note:          | For testing in cell culture applications, please filter before use. Note that you may experience some loss of protein during the filtration process. |
| Storage:       | Store at -80°C.  |
| Stability:     | Stable for 12 months from the date of receipt of the product under proper storage and handling conditions. Avoid repeated freeze-thaw cycles.        |
| RefSeq:        | <u><a href="#">NP_001135827</a></u>  |



[View online »](#)

|               |  |
|---------------|--|
| Locus ID:     | 60491  |
| UniProt ID:   | <a href="#">Q9GZT8</a> , <a href="#">A0A024R3V5</a>  |
| RefSeq Size:  | 1446   |
| Cytogenetics: | 2q33.1   |
| RefSeq ORF:   | 1134   |
| Synonyms:     | ALS2CR1; CALS-7; MDS015  |
| Summary:      | May function as a transcriptional corepressor through its interaction with COPS2, negatively regulating the expression of genes involved in neuronal differentiation.[UniProtKB/Swiss-Prot Function] |

### Product images:



Coomassie blue staining of purified NIF3L1 protein (Cat# [TP327825]). The protein was produced from HEK293T cells transfected with NIF3L1 cDNA clone (Cat# [RC227825]) using MegaTran 2.0 (Cat# [TT210002]).