

Product datasheet for **TP327825L**

ALS2CR1 (NIF3L1) (NM_001142355) Human Recombinant Protein

Product data:

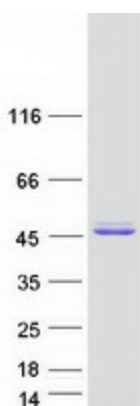
Product Type:	Recombinant Proteins
Description:	Recombinant protein of human NIF3 NGG1 interacting factor 3-like 1 (S. pombe) (NIF3L1), transcript variant 3, 1 mg
Species:	Human
Expression Host:	HEK293T
Expression cDNA Clone or AA Sequence:	>RC227825 protein sequence Red =Cloning site Green =Tags(s)
	<p>MLSSCVRPVPTTVRFVDSLICNSSRSFMDLKALLSSLNDFASLSFAESWDNVGLLVEPSPHTVNTLFLT NDLTEEVMEVLQKKADLILSYHPIFRPMKRITWNTWKERLVIRALENRVGIYSPHTAYDAAPQGVNNW LAKGLGACTSRPIHPSKAPNYPTEGNHRVEFNVNYTQDLDKVMSAVKGDGVSVTSFSARTGNEEQTRIN LNCTQKALMQVDFLSRNKQLYQKTEILSLEKPLLLHTGMGRCLTLDSEVSLATMIDRIKRHLKLSHIRL ALGVGRTLESQVKVVALCAGSGSSVLQGVADLYLTGEMSHHDTLDAASQGINVILCEHSNTERGFLSDL RDMLDSHLENKINIILSETDRDPLQV</p> <p>TRTRPLEQKLISEEDLAANDILDYKDDDDKV</p>
Tag:	C-Myc/DDK
Predicted MW:	38.8 kDa
Concentration:	>0.05 µg/µL as determined by microplate BCA method
Purity:	> 80% as determined by SDS-PAGE and Coomassie blue staining
Buffer:	25 mM Tris-HCl, 100 mM glycine, pH 7.3, 10% glycerol
Preparation:	Recombinant protein was captured through anti-DDK affinity column followed by conventional chromatography steps.
Note:	For testing in cell culture applications, please filter before use. Note that you may experience some loss of protein during the filtration process.
Storage:	Store at -80°C.
Stability:	Stable for 12 months from the date of receipt of the product under proper storage and handling conditions. Avoid repeated freeze-thaw cycles.
RefSeq:	<u>NP_001135827</u>



[View online »](#)

Locus ID:	60491
UniProt ID:	Q9GZT8 , A0A024R3V5
RefSeq Size:	1446
Cytogenetics:	2q33.1
RefSeq ORF:	1134
Synonyms:	ALS2CR1; CALS-7; MDS015
Summary:	May function as a transcriptional corepressor through its interaction with COPS2, negatively regulating the expression of genes involved in neuronal differentiation.[UniProtKB/Swiss-Prot Function]

Product images:



Coomassie blue staining of purified NIF3L1 protein (Cat# [TP327825]). The protein was produced from HEK293T cells transfected with NIF3L1 cDNA clone (Cat# [RC227825]) using MegaTran 2.0 (Cat# [TT210002]).