

## Product datasheet for TP327762

### ALS2CR1 (NIF3L1) (NM\_001136039) Human Recombinant Protein

#### Product data:

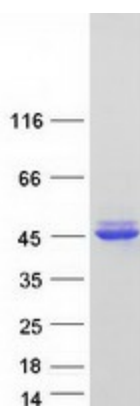
Product Type:	Recombinant Proteins
Description:	Recombinant protein of human NIF3 NGG1 interacting factor 3-like 1 (S. pombe) (NIF3L1), transcript variant 1, 20 µg
Species:	Human
Expression Host:	HEK293T
Expression cDNA Clone or AA Sequence:	>RC227762 protein sequence Red=Cloning site Green=Tags(s)
	<p>MLSSCVRPVPTTVRFVDSLICNSSRSFMDLKALLSSLNDFASLSFAESWDNVGLLVEPSPHTVNTLFLT  NDLTEEVMEEVLQKKADLILSYHPIFRPMKRITWNTWKERLVIRALENRVGIYSPHTAYDAAPQGVNNW  LAKGLGACTSRPIHPSKAPNYPTEGNHRVEFNVNYTQDLDKVMSAVKGDGVSVTSFSARTGNEEQTRIN  LNCTQKALMQVDFLSRNKQLYQKTEILSLEKPLLLHTGMGRCLTLDSEVSLATMIDRIKRHLKLSHIRL  ALGVGRTLESQVKVVALCAGSGSSVLQGVADLYLTGEMSHHDTLDAASQGINVILCEHSNTERGFLSDL  RDMLDSHLENKINIILSETDRDPLQV</p> <p>TRTRPLEQKLISEEDLAANDILDYKDDDDKV</p>
Tag:	C-Myc/DDK
Predicted MW:	41.8 kDa
Concentration:	>0.05 µg/µL as determined by microplate BCA method
Purity:	> 80% as determined by SDS-PAGE and Coomassie blue staining
Buffer:	25 mM Tris-HCl, 100 mM glycine, pH 7.3, 10% glycerol
Preparation:	Recombinant protein was captured through anti-DDK affinity column followed by conventional chromatography steps.
Note:	For testing in cell culture applications, please filter before use. Note that you may experience some loss of protein during the filtration process.
Storage:	Store at -80°C.
Stability:	Stable for 12 months from the date of receipt of the product under proper storage and handling conditions. Avoid repeated freeze-thaw cycles.
RefSeq:	<a href="#">NP_001129511</a>



[View online »](#)

Locus ID:	60491
UniProt ID:	<a href="#">Q9GZT8</a> , <a href="#">A0A024R3V7</a>
RefSeq Size:	1497
Cytogenetics:	2q33.1
RefSeq ORF:	1131
Synonyms:	ALS2CR1; CALS-7; MDS015
Summary:	May function as a transcriptional corepressor through its interaction with COPS2, negatively regulating the expression of genes involved in neuronal differentiation.[UniProtKB/Swiss-Prot Function]

### Product images:



Coomassie blue staining of purified NIF3L1 protein (Cat# TP327762). The protein was produced from HEK293T cells transfected with NIF3L1 cDNA clone (Cat# [RC227762]) using MegaTran 2.0 (Cat# [TT210002]).