

## Product datasheet for **TP327754M**

### MEF2BNB (BORCS8) (NM\_001145784) Human Recombinant Protein

#### Product data:

Product Type:	Recombinant Proteins
Description:	Recombinant protein of human hypothetical protein LOC729991 (LOC729991), transcript variant 1, 100 µg
Species:	Human
Expression Host:	HEK293T
Expression cDNA Clone or AA Sequence:	>RC227754 representing NM_001145784 <b>Red</b> =Cloning site <b>Green</b> =Tags(s)  MEEPQLKGGKVTDKFTESVYVLNAPSVALYRLQEHVRRSLPELAQHKADMQRWEEQSQGAIYVEYA CSAVKNLVDSSVYFRSVEGLLKQAISIRDHMNASAQGHSPEEPPSSA  <b>TRTRPLEQKLISEEDLAANDILDYKDDDDKV</b>
Tag:	C-Myc/DDK
Predicted MW:	13.2 kDa
Concentration:	>0.05 µg/µL as determined by microplate BCA method
Purity:	> 80% as determined by SDS-PAGE and Coomassie blue staining
Buffer:	25 mM Tris-HCl, 100 mM glycine, pH 7.3, 10% glycerol
Preparation:	Recombinant protein was captured through anti-DDK affinity column followed by conventional chromatography steps.
Note:	For testing in cell culture applications, please filter before use. Note that you may experience some loss of protein during the filtration process.
Storage:	Store at -80°C.
Stability:	Stable for 12 months from the date of receipt of the product under proper storage and handling conditions. Avoid repeated freeze-thaw cycles.
RefSeq:	<a href="#">NP_001139256</a>
Locus ID:	729991
UniProt ID:	<a href="#">Q96FH0</a>
Cytogenetics:	19p13.11



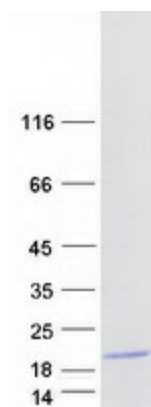
[View online »](#)

RefSeq ORF: 357

Synonyms: MEF2BNB

Summary: As part of the BORC complex may play a role in lysosomes movement and localization at the cell periphery. Associated with the cytosolic face of lysosomes, the BORC complex may recruit ARL8B and couple lysosomes to microtubule plus-end-directed kinesin motor.  
[UniProtKB/Swiss-Prot Function]

### Product images:



Coomassie blue staining of purified BORCS8 protein (Cat# [TP327754]). The protein was produced from HEK293T cells transfected with BORCS8 cDNA clone (Cat# [RC227754]) using MegaTran 2.0 (Cat# [TT210002]).