

Product datasheet for **TP327716M**

LANCL1 (NM_001136574) Human Recombinant Protein

Product data:

Product Type:	Recombinant Proteins
Description:	Recombinant protein of human LanC lantibiotic synthetase component C-like 1 (bacterial) (LANCL1), transcript variant 2, 100 µg
Species:	Human
Expression Host:	HEK293T
Expression cDNA Clone or AA Sequence:	>RC227716 protein sequence Red=Cloning site Green=Tags(s)

MAQRAFPNPYADYNKSLAEGYFDAAGRRLTPEFSQRLTNKIRELLQQMERGLKSADPRDGTGYTGWAGIAV
LYLHLYDVFQDPAYLQLAHGYVKQSLNCLTKRSITFLCGDAGPLAVAAVLYHKMNNEKQAEDCITRLIHL
NKIDPHAPNEMLYGRIGYIYALLFVNKNFGVEKIPQSHIQQICETILTSGENLARKRNFTAKSPLMYEWY
QEYVVGAAHGLAGIYIYMLMQPSLQVSQGLHSLVKPSVDYVCQLKFPSPGNYPPIGDNRDLLVHWCHGAP
GVIYMLIQAYKVFREEKYLCDAYQCADVIWQYGLLKKGYGLCHGSAGNAYAFLLTYNLTQDMKYLYRACK
FAEWCLEYGEHGCRTPDTPFSLFEGMAGTIYFLADLLVPTKARFPAPFL

TRTRPLEQKLISEEDLAANDILDYKDDDDKV

Tag:	C-Myc/DDK
Predicted MW:	45.1 kDa
Concentration:	>0.05 µg/µL as determined by microplate BCA method
Purity:	> 80% as determined by SDS-PAGE and Coomassie blue staining
Buffer:	25 mM Tris-HCl, 100 mM glycine, pH 7.3, 10% glycerol
Preparation:	Recombinant protein was captured through anti-DDK affinity column followed by conventional chromatography steps.
Note:	For testing in cell culture applications, please filter before use. Note that you may experience some loss of protein during the filtration process.
Storage:	Store at -80°C.
Stability:	Stable for 12 months from the date of receipt of the product under proper storage and handling conditions. Avoid repeated freeze-thaw cycles.
RefSeq:	<u>NP_001130046</u>



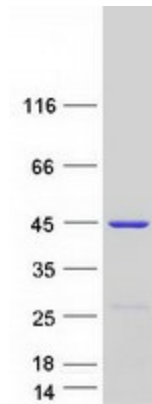
[View online »](#)

Locus ID: 10314
UniProt ID: [Q43813](#), [Q53TN2](#)
RefSeq Size: 4531
Cytogenetics: 2q34
RefSeq ORF: 1197
Synonyms: GPR69A; p40

Summary: This gene encodes a loosely associated peripheral membrane protein related to the LanC family of bacterial membrane-associated proteins involved in the biosynthesis of antimicrobial peptides. This protein may play a role as a peptide-modifying enzyme component in eukaryotic cells. Previously considered a member of the G-protein-coupled receptor superfamily, this protein is now in the LanC family. Multiple alternatively spliced variants, encoding the same protein, have been identified. [provided by RefSeq, Nov 2008]

Protein Families: Druggable Genome

Product images:



Coomassie blue staining of purified LANCL1 protein (Cat# [TP327716]). The protein was produced from HEK293T cells transfected with LANCL1 cDNA clone (Cat# [RC227716]) using MegaTran 2.0 (Cat# [TT210002]).