

## Product datasheet for **TP327713L**

### **ROBO1 (NM\_001145844) Human Recombinant Protein**

#### **Product data:**

Product Type:	Recombinant Proteins
Description:	Recombinant protein of human roundabout, axon guidance receptor, homolog 1 (Drosophila) (ROBO1), transcript variant 3, 1 mg
Species:	Human
Expression Host:	HEK293T



[View online »](#)

**Expression cDNA** >RC227713 representing NM\_001145844

**Clone or AA Sequence:** Red=Cloning site Green=Tags(s)

MIAEPAHFYLFGLICLCSGSRRLRQEDFPPRIVEHPSDLIVSKGEPATLNCKAEGRPPTIEWYKGGERVE  
 TDKDDPRSHRMLLPSSGLFFLRIVHGRKSRPDEGVYVCVARNYLGEAVSHNASLEVAILRDDFRQNPSDV  
 MVAVGEPAVMECQPPRGHPEPTISWKKDGSPLDDKDERITIRGGKLMITYTRKSDAGKYVCVGTNMVGER  
 ESEVAELTVLERPSFVKRPSNLAVTVDDSAEFKCEARGDPVPTVRWRKDDGELPKSRYEIRDDHTLKIRK  
 VTAGDMGSYTCVAENMVGKAEASATLTVQVGSEPPHFVVKPRDQVVALGRTVTFQCEATGNPQPAIFWRR  
 EGSQNLLFSYQPPQSSSRFSVSQTGDLTITNVQRSVDVGYIQCQLNVAGSIITKAYLEVTDVIADRPVV  
 IRQGPVNQTVAVDGTFLVSCVATGSPVPTILWRKDGVLVSTQDSRIKQLENGVLQIRYAKLGDTGRYTCI  
 ASTPSGEATWSAYIEVQEFQVVPVQPPRPTDNLIPSPAPSKPEVTDVSRNTVTLVSWQPNLNSGATPTSII  
 EAFSHASGSSWQVAENVKTETSIAIKGLKPNAILFLVRAANAYGISDPSQISDPVKTQDVLPTSQGVHD  
 KQVQRELGNVHLHNPVLSSSSIEVHWTVDQQSQYIQGYKILYRPSGANHGESDVLVFEVTRPAKNSV  
 VIPDLRKGVNYEIKARPFNEFQGADSEIKFAKTLLEEAPSAPPQGVTVSKNDGNGTAILVSWQPPPEDTQ  
 NGMVQEYKVVWCLGNETRYHINKTVDGSTFSVIPFLVPGIRYSVEVAASTGAGSGVKSEPPQFIQLDAHGN  
 PVSPEDQVSLAQQISDVVKQPAFIAGIGAACWILMVFSIWLRYRHRKRNGLTSTYAGIRKVITYQRGGEA  
 VSSGGRPGLLNISEPAAQPWLADTWPNTGNNHNDCSISCTAGNGNSDSNLTTYSRPADCIANYNQLDN  
 KQTNLMLPESTVYGDVLSNKINEMKTFNSPNLKDGRFVNPSGQPTPYATTQLIQSNLSNNMNGSGSDG  
 EKHWKPLGQKQEVAPVQYNIVEQNKLNDYRANDTVPTIPYNQSYDQNTGGSYNSSDRGSSTSGSQGH  
 KKGARTPKVPKQGGMNWADLLPPPPAHPHPSNSEEYNISVDESVDQEMPCPVPPARMYLQDDELEEEED  
 ERGPTPPVARGAASSPAVSYSHQSTATLTPSPQEELQPMLQDCPEETGHMQHQPDRRRQPVSPPPPRPI  
 SPPHTYGYISGLVSDMDTDAPEEEEEDEADMEVAKMQTRRLLRGLLEQTPASSVGDLESSVTGSMINGWG  
 SASEEDNISSGRSSVSSSDGSFFTDADFAQAVAAAAEYAGLKVARRQMQDAAGRRHFHASQCPRPTSPVS  
 TDSNMSAAVMQKTRPAKCLKHQPGHLRRETYDDLPPPPVPPPAIKSPTAQSKTQLEVRPVVVKLPSMD  
 ARTDRSSDRKGSYKGREVLDGRQVDMRTNPGDPREAQEQQNDGKGRGNKAAKRDLPKAKTHLIQEDIL  
 PYCRPTFPTSNNPRDPSSSSSMSSRGSGSRQREQANVGRRNIAEMQVLGGYERGEDNNEELEETES

TRTRPLEQKLISEEDLAANDILDYKDDDDKV

**Tag:** C-Myc/DDK

**Predicted MW:** 175.7 kDa

**Concentration:** >0.1 µg/µL as determined by microplate BCA method

**Purity:** > 80% as determined by SDS-PAGE and Coomassie blue staining

**Buffer:** 25 mM Tris-HCl, 100 mM glycine, pH 7.3, 10% glycerol

**Preparation:** Recombinant protein was captured through anti-DDK affinity column followed by conventional chromatography steps.

**Note:** For testing in cell culture applications, please filter before use. Note that you may experience some loss of protein during the filtration process.

**Storage:** Store at -80°C.

**Stability:** Stable for 12 months from the date of receipt of the product under proper storage and handling conditions. Avoid repeated freeze-thaw cycles.

RefSeq: [NP\\_001139316](#)

Locus ID: 6091

UniProt ID: [Q9Y6N7](#)

Cytogenetics: 3p12.3

RefSeq ORF: 4818

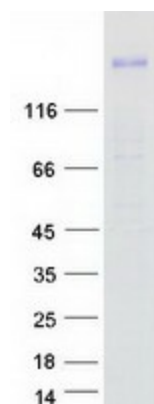
Synonyms: axon guidance receptor; DUTT1; FLJ21882; MGC131599; MGC133277; roundabout, axon guidance receptor, homolog 1 (Drosophila); roundabout 1; SAX3

**Summary:** Bilateral symmetric nervous systems have special midline structures that establish a partition between the two mirror image halves. Some axons project toward and across the midline in response to long-range chemoattractants emanating from the midline. The product of this gene is a member of the immunoglobulin gene superfamily and encodes an integral membrane protein that functions in axon guidance and neuronal precursor cell migration. This receptor is activated by SLIT-family proteins, resulting in a repulsive effect on glioma cell guidance in the developing brain. A related gene is located at an adjacent region on chromosome 3. Multiple transcript variants encoding different isoforms have been found for this gene. [provided by RefSeq, Mar 2009]

Protein Families: Druggable Genome

Protein Pathways: Axon guidance

### Product images:



Coomassie blue staining of purified ROBO1 protein (Cat# [TP327713]). The protein was produced from HEK293T cells transfected with ROBO1 cDNA clone (Cat# [RC227713]) using MegaTran 2.0 (Cat# [TT210002]).