

## Product datasheet for **TP327708L**

### CHAC1 (NM\_001142776) Human Recombinant Protein

#### Product data:

Product Type:	Recombinant Proteins
Description:	Purified recombinant protein of Homo sapiens ChaC, cation transport regulator homolog 1 (E. coli) (CHAC1), transcript variant 2, 1 mg
Species:	Human
Expression Host:	HEK293T
Expression cDNA Clone or AA Sequence:	>RC227708 representing NM_001142776 <b>Red</b> =Cloning site <b>Green</b> =Tags(s)
	<p> MGG AQLPSGARPGVCVRRSFRAHAGDQPRRPPGPIVPGTMKQESAAPNTPPTSQSPTPSAQFPRND  G  DPQALWIFGYGSLVWRPDFAYSDSRVGFVRGYSRRFWQGDTFHRGSDKMPGRVVTLLDHEGCTWGVA  YQ  VQGEQNPGYLGPAPEEAIATQILACRGFSGHNLEYLLRLADFMQLCGPQAQDEHLAAIVDAVGTMLPCFC  PTEQALALV </p> <p><b>TRTRPLEQKLISEEDLAANDILDYKDDDDKV</b></p>
Tag:	C-Myc/DDK
Predicted MW:	23.6 kDa
Concentration:	>0.05 µg/µL as determined by microplate BCA method
Purity:	> 80% as determined by SDS-PAGE and Coomassie blue staining
Buffer:	25 mM Tris-HCl, 100 mM glycine, pH 7.3, 10% glycerol
Preparation:	Recombinant protein was captured through anti-DDK affinity column followed by conventional chromatography steps.
Note:	For testing in cell culture applications, please filter before use. Note that you may experience some loss of protein during the filtration process.
Storage:	Store at -80°C.
Stability:	Stable for 12 months from the date of receipt of the product under proper storage and handling conditions. Avoid repeated freeze-thaw cycles.
RefSeq:	<u><a href="#">NP_001136248</a></u>



[View online »](#)

Locus ID: 79094

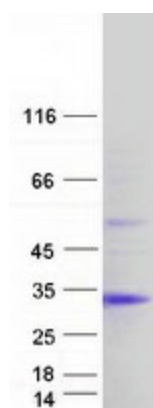
UniProt ID: [Q9BUX1](#)

Cytogenetics: 15q15.1

RefSeq ORF: 657

**Summary:** This gene encodes a member of the gamma-glutamylcyclotransferase family of proteins. The encoded protein has been shown to promote neuronal differentiation by deglycosylation of the Notch receptor, which prevents receptor maturation and inhibits Notch signaling. This protein may also play a role in the unfolded protein response, and in regulation of glutathione levels and oxidative balance in the cell. Elevated expression of this gene may indicate increased risk of cancer recurrence among breast and ovarian cancer patients. [provided by RefSeq, Sep 2016]

## Product images:



Coomassie blue staining of purified CHAC1 protein (Cat# [TP327708]). The protein was produced from HEK293T cells transfected with CHAC1 cDNA clone (Cat# [RC227708]) using MegaTran 2.0 (Cat# [TT210002]).