

Product datasheet for **TP327699M**

PPHLN1 (NM_001143789) Human Recombinant Protein

Product data:

| | |
|---------------------------------------|--------------------------------------------------------------------------------------------------|
| Product Type: | Recombinant Proteins |
| Description: | Purified recombinant protein of Homo sapiens periphilin 1 (PPHLN1), transcript variant 8, 100 µg |
| Species: | Human |
| Expression Host: | HEK293T |
| Expression cDNA Clone or AA Sequence: | >RC227699 representing NM_001143789 Red =Cloning site Green =Tags(s) |

MWSEGRYEYERIPRERAPPRSHPSDESGYRWTRDDHSASRQPEYRDMRDGFRRKSFYSSHYARERSPYKR
DNTFFRESPVGRKDSPHSRSGSSVSSRSYSPERSKSYSFHHQSQHRNKERPQVSLKTSRDTSPSSGSAVSS
SKVLDKPSRLTEKELAEAAASKWAAEKLEKSDESNLPEISEYEAGSTAPLFTDQPEEPESNTTHGIELFED
SQLTTRSKAIAASKTKEIEQVYRQDCETFGMVVKMLIEKDPSEKSIQFALRQNLHEIGERCVEELKHFA
EYDTSTQDFGEPF

TRTRPLEQKLISEEDLAANDILDYKDDDDKV

| | |
|----------------|------------------------------------------------------------------------------------------------------------------------------------------------------|
| Tag: | C-Myc/DDK |
| Predicted MW: | 33.7 kDa |
| Concentration: | >0.05 µg/µL as determined by microplate BCA method |
| Purity: | > 80% as determined by SDS-PAGE and Coomassie blue staining |
| Buffer: | 25 mM Tris-HCl, 100 mM glycine, pH 7.3, 10% glycerol |
| Preparation: | Recombinant protein was captured through anti-DDK affinity column followed by conventional chromatography steps. |
| Note: | For testing in cell culture applications, please filter before use. Note that you may experience some loss of protein during the filtration process. |
| Storage: | Store at -80°C. |
| Stability: | Stable for 12 months from the date of receipt of the product under proper storage and handling conditions. Avoid repeated freeze-thaw cycles. |
| RefSeq: | NP_001137261 |
| Locus ID: | 51535 |



[View online »](#)

UniProt ID: [Q8NEY8](#)

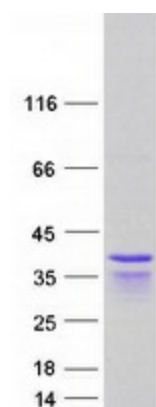
Cytogenetics: 12q12

RefSeq ORF: 879

Synonyms: CR; HSPC206; HSPC232

Summary: The protein encoded by this gene is one of the several proteins that become sequentially incorporated into the cornified cell envelope during the terminal differentiation of keratinocyte at the outer layers of epidermis. This protein interacts with periplakin, which is known as a precursor of the cornified cell envelope. The cellular localization pattern and insolubility of this protein suggest that it may play a role in epithelial differentiation and contribute to epidermal integrity and barrier formation. Multiple alternatively spliced transcript variants encoding distinct isoforms have been observed. [provided by RefSeq, Jul 2008]

Product images:



Coomassie blue staining of purified PPHLN1 protein (Cat# [TP327699]). The protein was produced from HEK293T cells transfected with PPHLN1 cDNA clone (Cat# [RC227699]) using MegaTran 2.0 (Cat# [TT210002]).