

## Product datasheet for **TP327610**

### SMAD6 (NM\_001142861) Human Recombinant Protein

#### Product data:

Product Type:	Recombinant Proteins
Description:	Recombinant protein of human SMAD family member 6 (SMAD6), transcript variant 2, 20 µg
Species:	Human
Expression Host:	HEK293T
Expression cDNA Clone or AA Sequence:	>RC227610 representing NM_001142861 <b>Red</b> =Cloning site <b>Green</b> =Tags(s)
	 MSRMGKPIETQKSPPPYSRLSPRDEYKPLDLS DSTLSYTETETATNSLITAPGEFSDASMSPDATKPSHW CSVAYWEHRTRVGRLYAVYDQAVSIFYDLPQGS GFCLGQLNLEQRSESVRRTRRSKIGFGILLSKEPDGVV AYNRGEHPIFVNSPTLDAPGGRALVVRKVPPGYSIKVDFERSGLQHAPEPDAADGPYDPNSVRISFAKG WGPCYSRQFITSCPCWLEILLNNPR  <b>TRTRPLEQKLISEEDLAANDILDYKDDDDKV</b>
Tag:	C-Myc/DDK
Predicted MW:	26.1 kDa
Concentration:	>0.05 µg/µL as determined by microplate BCA method
Purity:	> 80% as determined by SDS-PAGE and Coomassie blue staining
Buffer:	25 mM Tris-HCl, 100 mM glycine, pH 7.3, 10% glycerol
Preparation:	Recombinant protein was captured through anti-DDK affinity column followed by conventional chromatography steps.
Note:	For testing in cell culture applications, please filter before use. Note that you may experience some loss of protein during the filtration process.
Storage:	Store at -80°C.
Stability:	Stable for 12 months from the date of receipt of the product under proper storage and handling conditions. Avoid repeated freeze-thaw cycles.
RefSeq:	<u><a href="#">NP_001136333</a></u>
Locus ID:	4091
UniProt ID:	<u><a href="#">O43541</a></u>



[View online »](#)

Cytogenetics: 15q22.31

RefSeq ORF: 705

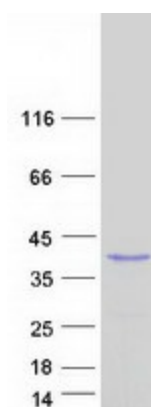
Synonyms: AOVD2; HsT17432; MADH6; MADH7

**Summary:** The protein encoded by this gene belongs to the SMAD family of proteins, which are related to *Drosophila* 'mothers against decapentaplegic' (Mad) and *C. elegans* Sma. SMAD proteins are signal transducers and transcriptional modulators that mediate multiple signaling pathways. This protein functions in the negative regulation of BMP and TGF-beta/activin-signalling. Multiple transcript variants have been found for this gene.[provided by RefSeq, Sep 2014]

**Protein Families:** Cancer stem cells, Druggable Genome, ES Cell Differentiation/IPS, Transcription Factors

**Protein Pathways:** TGF-beta signaling pathway

### Product images:



Coomassie blue staining of purified SMAD6 protein (Cat# TP327610). The protein was produced from HEK293T cells transfected with SMAD6 cDNA clone (Cat# [RC227610]) using MegaTran 2.0 (Cat# [TT210002]).