

Product datasheet for TP327441L

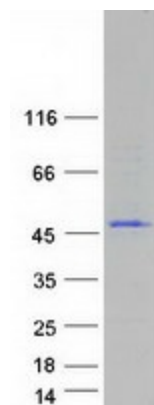
ARMH1 (NM_001145636) Human Recombinant Protein

Product data:

Product Type:	Recombinant Proteins
Description:	Recombinant protein of human chromosome 1 open reading frame 228 (C1orf228), 1 mg
Species:	Human
Expression Host:	HEK293T
Expression cDNA Clone or AA Sequence:	>RC227441 representing NM_001145636 <div> <div>Red</div>=Cloning site <div>Green</div>=Tags(s) </div> <p> MTSIKEQA AISRLLSFLQEWDNAGKVARSHILDKFIETNQGKTAPELEQEFSSQGASLFLVRLTTSRLRITY MTDSCKLEKLLRSIGIFLSAVSSNRYLIEFLEVGGVLTLLLEILGLEKIKEEAKKESVKLLQVIANSGRITYK ELICESYGVRSIAEFLAKSKSEETQEEVQVLLDSLHGNPKYQNNQVYKGLIALLPCESPKAQQLSLQTLR TAQPIIGTTHPSIVDCVLKVLGTMHLEVQYEAIELIKDLVGYDVRQALLKGLVALLIPSVKEISKLQAKI LSDPSVLQLTPSLPMFLQAAAAKAIGVLARNDSIAEELLYLRVVRGLMAAMGNTDHSNSQRLASLTLE CFVQMFPLVAEHVRKCMGEELYQLFLSNAEDLYMKIDSIQADILAANTVNVTKALCLHGSSYSMTLYGS RDSAQMAYLTHFEEDVESKE </p> <div> <div>TR</div> <div>TRPLEQKLISEEDLA</div> <div>ANDILDYKDDDDKV</div> </div>
Tag:	C-Myc/DDK
Predicted MW:	48.7 kDa
Concentration:	>0.05 µg/µL as determined by microplate BCA method
Purity:	> 80% as determined by SDS-PAGE and Coomassie blue staining
Buffer:	25 mM Tris-HCl, 100 mM glycine, pH 7.3, 10% glycerol
Preparation:	Recombinant protein was captured through anti-DDK affinity column followed by conventional chromatography steps.
Note:	For testing in cell culture applications, please filter before use. Note that you may experience some loss of protein during the filtration process.
Storage:	Store at -80°C.
Stability:	Stable for 12 months from the date of receipt of the product under proper storage and handling conditions. Avoid repeated freeze-thaw cycles.
RefSeq:	<u>NP_001139108</u>


[View online »](#)

Locus ID: 339541
UniProt ID: [Q6PIY5](#)
Cytogenetics: 1p34.1
RefSeq ORF: 1320
Synonyms: C1orf228; NCRNA000082; p40

Product images:


Coomassie blue staining of purified ARMH1 protein (Cat# [TP327441]). The protein was produced from HEK293T cells transfected with ARMH1 cDNA clone (Cat# [RC227441]) using MegaTran 2.0 (Cat# [TT210002]).