

## Product datasheet for TP327437L

### HEF1 (NEDD9) (NM\_001142393) Human Recombinant Protein

#### Product data:

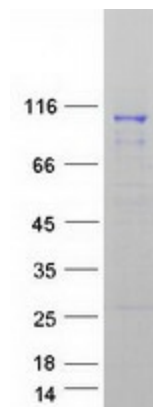
<b>Product Type:</b>	Recombinant Proteins
<b>Description:</b>	Recombinant protein of human neural precursor cell expressed, developmentally down-regulated 9 (NEDD9), transcript variant 3, 1 mg
<b>Species:</b>	Human
<b>Expression Host:</b>	HEK293T
<b>Expression cDNA Clone or AA Sequence:</b>	>RC227437 representing NM_001142393 <b>Red</b> =Cloning site <b>Green</b> =Tags(s)
	MWTRNLMARALYDNVPECAEELAFRKGDILTVIEQNTGGLEGWWLCSLHGRQGIVPGNRVKLLIGPMQET ASSHEQPASGLMQQTFGQQKLYQVPNPQAAPRDTIYQVPPSYQNQGIYQVPTGHGTQEVEYQVPPSVQR SIGGTSGPHVGGKVVITPVRTGHGYVYEYPSRYQKDVDYDIPPSHTTQGVYDIPSSAKGPVFSVPVGEIKP QGVYDIPPTKGVYAIPPSACRDEAGLREKDYDFPPMRQAGRPDLRPEGVYDIPPTCTKPAGKDLHVKYN CDIPGAAEPVARRHQSLSPNHPPPQLGQSVGSQNDAYDVPRGVQFLEPPAETSEKANPQERDGVYDVPLH NPPDAKGSRDLDGINRLSFSSTGSTRSNMSTSSTSSKESLSASPAQDKRFLDLPDTAIERLQRLQAL EMGVSSLMALVTTDWRCYGYMERHINEIRTAVDKVELFLKEYLHFVKGAVANAACLPELILHNKMKRELQ RVEDSHQILSQTSHDLNECSWSLNLAINKPQNKCDLDRFVMVAKTVPDDAKQLTTTINTNAEALFRPG PGSLHLKNGPESIMNSTEYPHGGSQQLLHPGDHKAQAHNKALPPGLSKEQAPDCSSSDGERSWMDYD YVHLQGKEEFERQQKELLEKENIMKQNKMQLEHHQLSQFQLLEQITKPVENDISKWKPSQLPTTNSGV SAQDRQLLCFYDQCETHFISLLNAIDALFSCVSSAQPPIFVAHSKFVILSAHKLFIGDTLTRQVTAQ DIRNKVMNSSNQLCEQLKTIVMATKMAALHYPSTTALQEMVHQLVTDLSRNAQLFKRSLLEMATF
	<b>TRTRPLEQKLISEEDLAANDILDYKDDDDKV</b>
<b>Tag:</b>	C-Myc/DDK
<b>Predicted MW:</b>	92.7 kDa
<b>Concentration:</b>	>0.05 µg/µL as determined by microplate BCA method
<b>Purity:</b>	> 80% as determined by SDS-PAGE and Coomassie blue staining
<b>Buffer:</b>	25 mM Tris-HCl, 100 mM glycine, pH 7.3, 10% glycerol
<b>Preparation:</b>	Recombinant protein was captured through anti-DDK affinity column followed by conventional chromatography steps.



[View online »](#)

<b>Note:</b>	For testing in cell culture applications, please filter before use. Note that you may experience some loss of protein during the filtration process.
<b>Storage:</b>	Store at -80°C.
<b>Stability:</b>	Stable for 12 months from the date of receipt of the product under proper storage and handling conditions. Avoid repeated freeze-thaw cycles.
<b>RefSeq:</b>	<a href="#">NP_001135865</a>
<b>Locus ID:</b>	4739
<b>UniProt ID:</b>	<a href="#">Q14511</a> , <a href="#">A0A024QZV9</a>
<b>Cytogenetics:</b>	6p24.2
<b>RefSeq ORF:</b>	2502
<b>Synonyms:</b>	CAS-L; CAS2; CASL; CASS2; HEF1
<b>Summary:</b>	The protein encoded by this gene is a member of the CRK-associated substrates family. Members of this family are adhesion docking molecules that mediate protein-protein interactions for signal transduction pathways. This protein is a focal adhesion protein that acts as a scaffold to regulate signaling complexes important in cell attachment, migration and invasion as well as apoptosis and the cell cycle. This protein has also been reported to have a role in cancer metastasis. Alternative splicing results in multiple transcript variants. [provided by RefSeq, Aug 2012]

### Product images:



Coomassie blue staining of purified NEDD9 protein (Cat# [TP327437]). The protein was produced from HEK293T cells transfected with NEDD9 cDNA clone (Cat# [RC227437]) using MegaTran 2.0 (Cat# [TT210002]).