

## Product datasheet for TP327437

### HEF1 (NEDD9) (NM\_001142393) Human Recombinant Protein

#### Product data:

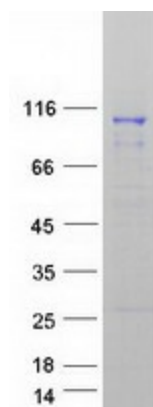
Product Type:	Recombinant Proteins
Description:	Recombinant protein of human neural precursor cell expressed, developmentally down-regulated 9 (NEDD9), transcript variant 3, 20 µg
Species:	Human
Expression Host:	HEK293T
Expression cDNA Clone or AA Sequence:	>RC227437 representing NM_001142393 <b>Red</b> =Cloning site <b>Green</b> =Tags(s)
	<p>MWTRNLMARALYDINVPECAEELAFRKGDILTVIEQNTGGLEGWWLCSLHGRQGIVPGNRVKLLIGPMQET  ASSHEQPASGLMQQTFGQQKLYQVPNPQAAPRDTIYQVPPSYQNQGIYQVPTGHGTQEVEYQVPPSVQR  SIGGTSGPHVGGKVVITPVRTGHGYVYEYPSRYQKDVDYDIPPSHTTQGVYDIPSSAKGPVFSVPVGEIKP  QGVYDIPPTKGVYAIPPSACRDEAGLREKDYDFPPMRQAGRPDLRPEGVYDIPPTCTKPAGKDLHVYKN  CDIPGAAEPVARRHQSLSPNHPPPQLGQSVGSQNDAYDVPRGVQFLEPPAETSEKANPQERDGVYDVPLH  NPPDAKGSRDLDGINRLSFSSTGSTRSNMSTSSTSSKESLSASPAQDKRFLDLPDTAIERLQRLQAL  EMGVSSLMALVTTDWRCYGYMERHINEIRTAVDKVELFLKEYLHFVKGAVANAACLPELILHNKMKRELQ  RVEDSHQILSQTSHDLNECSWSLNLAINKPQNKCDLDRFVMVAKTVPDDAKQLTTTINTNAEALFRPG  PGSLHLKNGPESIMNSTEYPHGGSQGQLLHPGDHKAQAHNKALPPGLSKEQAPDCSSSDGSESWMDDYD  YVHLQGKEEFERQQKELLEKENIMKQNKMQLEHHQLSQFQLLEQITKPVENDISKWKPSQLPTTNSGV  SAQDRQLLFCYYDQCETHFISLLNAIDALFSCVSSAQPPRIFVAHSKFVILSAHKLFIGDTLTRQVTAQ  DIRNKVMNSSNQLCEQLKTIVMATKMAALHYPSTTALQEMVHQLVTDLSRNAQLFKRSLLEMATF</p> <p><b>TRTRPLEQKLISEEDLAANDILDYKDDDDKV</b></p>
Tag:	C-Myc/DDK
Predicted MW:	92.7 kDa
Concentration:	>0.05 µg/µL as determined by microplate BCA method
Purity:	> 80% as determined by SDS-PAGE and Coomassie blue staining
Buffer:	25 mM Tris-HCl, 100 mM glycine, pH 7.3, 10% glycerol
Preparation:	Recombinant protein was captured through anti-DDK affinity column followed by conventional chromatography steps.



[View online »](#)

<b>Note:</b>	For testing in cell culture applications, please filter before use. Note that you may experience some loss of protein during the filtration process.
<b>Storage:</b>	Store at -80°C.
<b>Stability:</b>	Stable for 12 months from the date of receipt of the product under proper storage and handling conditions. Avoid repeated freeze-thaw cycles.
<b>RefSeq:</b>	<a href="#">NP_001135865</a>
<b>Locus ID:</b>	4739
<b>UniProt ID:</b>	<a href="#">Q14511</a> , <a href="#">A0A024QZV9</a>
<b>Cytogenetics:</b>	6p24.2
<b>RefSeq ORF:</b>	2502
<b>Synonyms:</b>	CAS-L; CAS2; CASL; CASS2; HEF1
<b>Summary:</b>	The protein encoded by this gene is a member of the CRK-associated substrates family. Members of this family are adhesion docking molecules that mediate protein-protein interactions for signal transduction pathways. This protein is a focal adhesion protein that acts as a scaffold to regulate signaling complexes important in cell attachment, migration and invasion as well as apoptosis and the cell cycle. This protein has also been reported to have a role in cancer metastasis. Alternative splicing results in multiple transcript variants. [provided by RefSeq, Aug 2012]

### Product images:



Coomassie blue staining of purified NEDD9 protein (Cat# TP327437). The protein was produced from HEK293T cells transfected with NEDD9 cDNA clone (Cat# [RC227437]) using MegaTran 2.0 (Cat# [TT210002]).