

Product datasheet for **TP327432L**

TTC39C (NM_001135993) Human Recombinant Protein

Product data:

Product Type: Recombinant Proteins
Description: Recombinant protein of human tetratricopeptide repeat domain 39C (TTC39C), transcript variant 1, 1 mg
Species: Human
Expression Host: HEK293T
Expression cDNA Clone or AA Sequence: >RC227432 representing NM_001135993
Red=Cloning site **Green**=Tags(s)

MAGSEQQRPRRRDDGSDSAAAAAAAAAPLQDAELALAGINMLLNNGFRES DQLFKQYRNHSPLMSFGASFVS
FLNAMMTFEEEEKMLACDDLKTEKLCSEEEAGVIETIKNKIKKNVDVRKSAPSMVDRLQRQIIIADCQV
YLAVLSFVKQELSAYIKGGWILRKAWKIYNKCYLDINALQELYQKKLTEESLTSDAANDNHIVAEGVSEE
SLNRLKGAVSFGYGLFHLCISMVPPNLLKIINLLGFPGDRLQGLSSLMYASESKDMKAPLATLALLWYHT
VWRPFFALDGS DNKAGLDEAKEILLKKEAAYPNSSLFMFFKGRIQRLEQCINSALTSFHTALELAVDQRE
IQHVCLYEIGWCSMIELNFKDAFDSFERLKNESRWSQCYAYLTAVCQGATGDVDGAQIVFKEVQKLFKR
KNNQIEQFSVKKAERFRKQTPTKALCVLASIEVLYLWKALPNCSFPNLQRMSQACHEVDDSSVGLKYLL
LGAIHKCLGNSEDAVQYFQRAVKDELRCRQNNLYVQPYACYELGCLLLDKPETVGRGRALLLQAKEDFSGY
DFENRLHVRIHAALASLRELVPQ

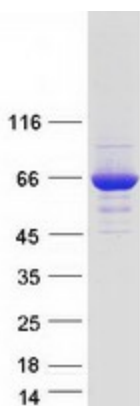
TRTRPLEQKLISEEDLAANDILDYKDDDDKV

Tag: C-Myc/DDK
Predicted MW: 65.7 kDa
Concentration: >0.05 µg/µL as determined by microplate BCA method
Purity: > 80% as determined by SDS-PAGE and Coomassie blue staining
Buffer: 25 mM Tris-HCl, 100 mM glycine, pH 7.3, 10% glycerol
Preparation: Recombinant protein was captured through anti-DDK affinity column followed by conventional chromatography steps.
Note: For testing in cell culture applications, please filter before use. Note that you may experience some loss of protein during the filtration process.
Storage: Store at -80°C.



[View online »](#)

Stability:	Stable for 12 months from the date of receipt of the product under proper storage and handling conditions. Avoid repeated freeze-thaw cycles.
RefSeq:	NP_001129465
Locus ID:	125488
UniProt ID:	Q8N584
Cytogenetics:	18q11.2
RefSeq ORF:	1749
Synonyms:	C18orf17; HsT2697

Product images:

Coomassie blue staining of purified TTC39C protein (Cat# [TP327432]). The protein was produced from HEK293T cells transfected with TTC39C cDNA clone (Cat# [RC227432]) using MegaTran 2.0 (Cat# [TT210002]).