

Product datasheet for **TP327383M**

CITED1 (NM_001144887) Human Recombinant Protein

Product data:

Product Type:	Recombinant Proteins
Description:	Purified recombinant protein of Homo sapiens Cbp/p300-interacting transactivator, with Glu/Asp-rich carboxy-terminal domain, 1 (CITED1), transcript variant 4, 100 µg
Species:	Human
Expression Host:	HEK293T
Expression cDNA	>RC227383 protein sequence
Clone or AA Sequence:	Red=Cloning site Green=Tags(s) MPTTSRPALDVKGGTSPAKEDANQEMSSVAYSNLAVKDRKAVAILHYPGVASNGTKASGAPTSSSGSPIG SPTTTPPTKPPSFNLHPAPHLLASMLQLQLNSQYQGMAAATPGQPGEAGPLQNWDFGAQAGGAESLPSA GAQSPAIIIDSDPVDEEVLMVSLVVELGLDRANELPELWLGQNEFDFTADFPSSC TRTRPLEQKLISEEDLAANDILDYKDDDDKV
Tag:	C-Myc/DDK
Predicted MW:	19.7 kDa
Concentration:	>0.05 µg/µL as determined by microplate BCA method
Purity:	> 80% as determined by SDS-PAGE and Coomassie blue staining
Buffer:	25 mM Tris-HCl, 100 mM glycine, pH 7.3, 10% glycerol
Preparation:	Recombinant protein was captured through anti-DDK affinity column followed by conventional chromatography steps.
Note:	For testing in cell culture applications, please filter before use. Note that you may experience some loss of protein during the filtration process.
Storage:	Store at -80°C.
Stability:	Stable for 12 months from the date of receipt of the product under proper storage and handling conditions. Avoid repeated freeze-thaw cycles.
RefSeq:	<u>NP_001138359</u>
Locus ID:	4435
UniProt ID:	<u>Q99966</u>



[View online »](#)

RefSeq Size: 830

Cytogenetics: Xq13.1

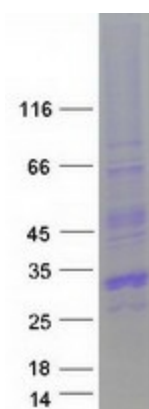
RefSeq ORF: 579

Synonyms: MSG1

Summary: This gene encodes a member of the CREB-binding protein/p300-interacting transactivator with Asp/Glu-rich C-terminal domain (CITED) family of proteins. The encoded protein, also known as melanocyte-specific gene 1, may function as a transcriptional coactivator and may play a role in pigmentation of melanocytes. Alternatively spliced transcript variants have been described. [provided by RefSeq, Jan 2009]

Protein Families: Transcription Factors

Product images:



Coomassie blue staining of purified CITED1 protein (Cat# [TP327383]). The protein was produced from HEK293T cells transfected with CITED1 cDNA clone (Cat# [RC227383]) using MegaTran 2.0 (Cat# [TT210002]).