

Product datasheet for **TP327383L**

CITED1 (NM_001144887) Human Recombinant Protein

Product data:

Product Type: Recombinant Proteins

Description: Purified recombinant protein of Homo sapiens Cbp/p300-interacting transactivator, with Glu/Asp-rich carboxy-terminal domain, 1 (CITED1), transcript variant 4, 1 mg

Species: Human

Expression Host: HEK293T

Expression cDNA >RC227383 protein sequence

Clone or AA Sequence: Red=Cloning site Green=Tags(s)

MPTTSRPALDVKGGTSPAKEDANQEMSSVAYSNLAVKDRKAVAILHYPGVASNGTKASGAPTSSSGSPIG
SPTTTPPTKPPSFNLHPAPHLLASMLQLKLNSQYQGMAAATPGQPGEAGPLQNWDFGAQAGGAESLPSA
GAQSPAIIIDSDPVDEEVLMVSLVVELGLDRANELPELWLGQNEFDFTADFPSSC

TRTRPLEQKLISEEDLAANDILDYKDDDDKV

Tag: C-Myc/DDK

Predicted MW: 19.7 kDa

Concentration: >0.05 µg/µL as determined by microplate BCA method

Purity: > 80% as determined by SDS-PAGE and Coomassie blue staining

Buffer: 25 mM Tris-HCl, 100 mM glycine, pH 7.3, 10% glycerol

Preparation: Recombinant protein was captured through anti-DDK affinity column followed by conventional chromatography steps.

Note: For testing in cell culture applications, please filter before use. Note that you may experience some loss of protein during the filtration process.

Storage: Store at -80°C.

Stability: Stable for 12 months from the date of receipt of the product under proper storage and handling conditions. Avoid repeated freeze-thaw cycles.

RefSeq: [NP_001138359](#)

Locus ID: 4435

UniProt ID: [Q99966](#)



[View online >](#)

RefSeq Size: 830

Cytogenetics: Xq13.1

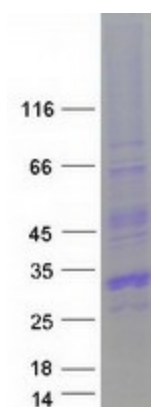
RefSeq ORF: 579

Synonyms: MSG1

Summary: This gene encodes a member of the CREB-binding protein/p300-interacting transactivator with Asp/Glu-rich C-terminal domain (CITED) family of proteins. The encoded protein, also known as melanocyte-specific gene 1, may function as a transcriptional coactivator and may play a role in pigmentation of melanocytes. Alternatively spliced transcript variants have been described. [provided by RefSeq, Jan 2009]

Protein Families: Transcription Factors

Product images:



Coomassie blue staining of purified CITED1 protein (Cat# [TP327383]). The protein was produced from HEK293T cells transfected with CITED1 cDNA clone (Cat# [RC227383]) using MegaTran 2.0 (Cat# [TT210002]).