

Product datasheet for TP327252M

Synaptotagmin 1 (SYT1) (NM_001135806) Human Recombinant Protein

Product data:

Product Type:	Recombinant Proteins
Description:	Recombinant protein of human synaptotagmin I (SYT1), transcript variant 3, 100 µg
Species:	Human
Expression Host:	HEK293T
Expression cDNA Clone or AA Sequence:	>RC227252 representing NM_001135806 Red =Cloning site Green =Tags(s)
	MVSESHHEALAAPPVTTVATVLP SNATEPASPGEKEDAFSKLKEKFMNELHKIPLPPWALIAIAIVAVL LVLTCFCICKKCLFKKKNNKKKGKEKGGKNAINMKDVKDLGKTMKDQALKDDDAETGLTDGEEKEEPKEE EKLGLQYSLDYDFQNNQLLVGIIQAAELPALDMGGTSDPYVKVFLLPDKKKKFETKVRKTLNPFVNEQ FTFKVPYSELGGKTLVMAVYDFDRFSKHDIIGEFKVP MNTVDFGHVTEEWRDLQSAEKEEQEKLGDICFS LRYVPTAGKLTVVILEAKNLKMDVGGLSDPYVKIHLMQNGKRLKKKTTIKKNTLNPYYNESFSFEVFP EQIQKVQVWTVLDYDKIGKND AIGKVFVGYNSTGAELRHWS DMLANPRRPIAQWHTLQVEEEVDAMLAV KK
	TRTRPLEQKLISEEDLAANDILDYKDDDDKV
Tag:	C-Myc/DDK
Predicted MW:	47.4 kDa
Concentration:	>0.05 µg/µL as determined by microplate BCA method
Purity:	> 80% as determined by SDS-PAGE and Coomassie blue staining
Buffer:	25 mM Tris-HCl, 100 mM glycine, pH 7.3, 10% glycerol
Bioactivity:	MS digestion standard (PMID: 27716408)
Preparation:	Recombinant protein was captured through anti-DDK affinity column followed by conventional chromatography steps.
Note:	For testing in cell culture applications, please filter before use. Note that you may experience some loss of protein during the filtration process.
Storage:	Store at -80°C.
Stability:	Stable for 12 months from the date of receipt of the product under proper storage and handling conditions. Avoid repeated freeze-thaw cycles.



[View online »](#)

RefSeq: [NP_001129278](#)

Locus ID: 6857

UniProt ID: [P21579](#), [A0A024RBE9](#)

Cytogenetics: 12q21.2

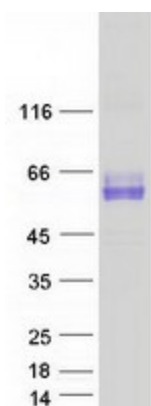
RefSeq ORF: 1266

Synonyms: BAGOS; P65; SVP65; SYT

Summary: The synaptotagmins are integral membrane proteins of synaptic vesicles thought to serve as Ca(2+) sensors in the process of vesicular trafficking and exocytosis. Calcium binding to synaptotagmin-1 participates in triggering neurotransmitter release at the synapse (Fernandez-Chacon et al., 2001 [PubMed 11242035]).[supplied by OMIM, Jul 2010]

Protein Families: Secreted Protein, Transmembrane

Product images:



Coomassie blue staining of purified SYT1 protein (Cat# [TP327252]). The protein was produced from HEK293T cells transfected with SYT1 cDNA clone (Cat# [RC227252]) using MegaTran 2.0 (Cat# [TT210002]).