

## Product datasheet for **TP327214M**

### MEF2B (NM\_001145785) Human Recombinant Protein

#### Product data:

|                                       |   |
|---------------------------------------|---|
| Product Type:                         | Recombinant Proteins  |
| Description:                          | Recombinant protein of human myocyte enhancer factor 2B (MEF2B), 100 µg   |
| Species:                              | Human   |
| Expression Host:                      | HEK293T   |
| Expression cDNA Clone or AA Sequence: | >RC227214 representing NM_001145785<br><b>Red</b> =Cloning site <b>Green</b> =Tags(s)   |
|                                       | <p>MGRKKIQISRILDQRNRQVFTFKRKFGMLMKKAYELSVLCDCEIALIIFNSANRLFQYASTDMDRVLLKYT<br/>EYSEPHESRTNTDILETLKRRGIGLDGPELEPDEGPEEPGEKFRRLAGEGGDPALPRPRLYPAAPAMPSP<br/>DVVYGALPPPGLDPSGLGEALPAQSRPSPFRPAAPKAGPPGLVHPLFSPSHLTSKTPPLYLPTTEGRRSD<br/>LPGGLAGPRGGLNTRSLSYGLQNPCSTATPGPLGSFPFLPGGPPEYGLGDPPIPPGGLLQPPTLAPWQP<br/>SRGDGPPAVSSQPSGGRLGEEGPTRGASPTPPVSIKSERLSPAPGGPGDFPKTFPYPLLLARSLAEP<br/>LRPGPALRRLPLADGWPR</p> <p><b>TRTRPLEQKLISEEDLAANDILDYKDDDDKV</b></p> |
| Tag:                                  | C-Myc/DDK   |
| Predicted MW:                         | 39 kDa  |
| Concentration:                        | >0.05 µg/µL as determined by microplate BCA method  |
| Purity:                               | > 80% as determined by SDS-PAGE and Coomassie blue staining   |
| Buffer:                               | 25 mM Tris-HCl, 100 mM glycine, pH 7.3, 10% glycerol  |
| Preparation:                          | Recombinant protein was captured through anti-DDK affinity column followed by conventional chromatography steps.  |
| Note:                                 | For testing in cell culture applications, please filter before use. Note that you may experience some loss of protein during the filtration process.  |
| Storage:                              | Store at -80°C.   |
| Stability:                            | Stable for 12 months from the date of receipt of the product under proper storage and handling conditions. Avoid repeated freeze-thaw cycles.   |
| RefSeq:                               | <a href="#">NP_001139257</a>  |
| Locus ID:                             | 100271849   |



[View online »](#)

UniProt ID: [Q02080](#), [A0A024R7K5](#)

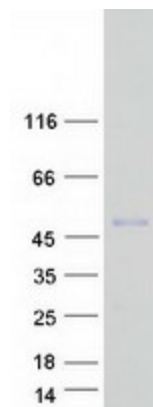
Cytogenetics: 19p13.11

RefSeq ORF: 1104

Synonyms: RSRFR2

**Summary:** The product of this gene is a member of the MADS/MEF2 family of DNA binding proteins. The protein is thought to regulate gene expression, including expression of the smooth muscle myosin heavy chain gene. This region undergoes considerable alternative splicing, with transcripts supporting two non-overlapping loci (GeneID 729991 and 100271849) as well as numerous read-through transcripts that span both loci (annotated as GeneID 4207). Several isoforms of this protein are expressed from either this locus or from some of the read-through transcripts annotated on GeneID 4207. [provided by RefSeq, Jan 2014]

### Product images:



Coomassie blue staining of purified MEF2B protein (Cat# [TP327214]). The protein was produced from HEK293T cells transfected with MEF2B cDNA clone (Cat# [RC227214]) using MegaTran 2.0 (Cat# [TT210002]).