

Product datasheet for **TP327214L**

MEF2B (NM_001145785) Human Recombinant Protein

Product data:

Product Type: Recombinant Proteins

Description: Recombinant protein of human myocyte enhancer factor 2B (MEF2B), 1 mg

Species: Human

Expression Host: HEK293T

Expression cDNA Clone or AA Sequence: >RC227214 representing NM_001145785

Red=Cloning site Green=Tags(s)

MGRKKIQISRILDQRNRQVFTFKRKFGMLMCKKAYELSVLCDCEIALIIFNSANRLFQYASTDMDRVLLKYT
EYSEPHESRTNTDILETLKRRGIGLDGPELEPDEGPEEPGEKFRRLAGEGGDPALPRPRLYPAAPAMPSP
DVVYGALPPPGLDPSGLGEALPAQSRPSPFRPAAPKAGPPGLVHPLFSPSHLTSKTPPLYLPTTEGRRSD
LPGGLAGPRGGLNTRSLSYGLQNPCSTATPGPLGSFPFLPGGPPEYGLGDPPIPPGGLLQPPTLAPWQP
SRGDGPPAVSSQPSGGRSLGEEGPTRGASPTPPVSIKSERLSPAPGGPGDFPKTFYPYLLLARSLAEP
LRPGPALRRRLPLADGWPR

TRTRPLEQKLISEEDLAANDILDYKDDDDKV

Tag: C-Myc/DDK

Predicted MW: 39 kDa

Concentration: >0.05 µg/µL as determined by microplate BCA method

Purity: > 80% as determined by SDS-PAGE and Coomassie blue staining

Buffer: 25 mM Tris-HCl, 100 mM glycine, pH 7.3, 10% glycerol

Preparation: Recombinant protein was captured through anti-DDK affinity column followed by conventional chromatography steps.

Note: For testing in cell culture applications, please filter before use. Note that you may experience some loss of protein during the filtration process.

Storage: Store at -80°C.

Stability: Stable for 12 months from the date of receipt of the product under proper storage and handling conditions. Avoid repeated freeze-thaw cycles.

RefSeq: [NP_001139257](#)

Locus ID: 100271849



[View online »](#)

UniProt ID: [Q02080](#), [A0A024R7K5](#)

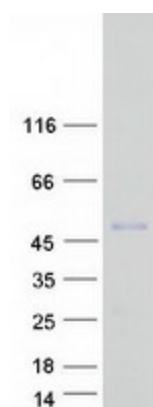
Cytogenetics: 19p13.11

RefSeq ORF: 1104

Synonyms: RSRFR2

Summary: The product of this gene is a member of the MADS/MEF2 family of DNA binding proteins. The protein is thought to regulate gene expression, including expression of the smooth muscle myosin heavy chain gene. This region undergoes considerable alternative splicing, with transcripts supporting two non-overlapping loci (GeneID 729991 and 100271849) as well as numerous read-through transcripts that span both loci (annotated as GeneID 4207). Several isoforms of this protein are expressed from either this locus or from some of the read-through transcripts annotated on GeneID 4207. [provided by RefSeq, Jan 2014]

Product images:



Coomassie blue staining of purified MEF2B protein (Cat# [TP327214]). The protein was produced from HEK293T cells transfected with MEF2B cDNA clone (Cat# [RC227214]) using MegaTran 2.0 (Cat# [TT210002]).