

Product datasheet for TP327214

MEF2B (NM_001145785) Human Recombinant Protein

Product data:

Product Type:	Recombinant Proteins
Description:	Recombinant protein of human myocyte enhancer factor 2B (MEF2B), 20 µg
Species:	Human
Expression Host:	HEK293T
Expression cDNA Clone or AA Sequence:	>RC227214 representing NM_001145785 Red=Cloning site Green=Tags(s)
	<p>MGRKKIQISRILDQRNRQVFTFKRKFGMLMKKAYELSVLCDCEIALIIFNSANRLFQYASTDMDRVLLKYT EYSEPHESRTNTDILETLKRRGIGLDGPELEPDEGPEEPGEKFRRLAGEGGDPALPRPRLYPAAPAMPSP DVVYGALPPPGLDPSGLGEALPAQSRPSPFRPAAPKAGPPGLVHPLFSPSHLTSKTPPLYLPTGRRSD LPGGLAGPRGGLNTRSLSYGLQNPCSTATPGPLGSFPFLPGGPPEYGLGDP PPPPPGLLQPPTLAPWQP SRGDGPPAVSSQPSGGRSLGEEGPTRGASPTPPVSIKSERLSPAPGGPGDFPKTFPYPLLLARSLAEP LRPGPALRRLPLADGWPR</p> <p>TRTRPLEQKLISEEDLAANDILDYKDDDDKV</p>
Tag:	C-Myc/DDK
Predicted MW:	39 kDa
Concentration:	>0.05 µg/µL as determined by microplate BCA method
Purity:	> 80% as determined by SDS-PAGE and Coomassie blue staining
Buffer:	25 mM Tris-HCl, 100 mM glycine, pH 7.3, 10% glycerol
Preparation:	Recombinant protein was captured through anti-DDK affinity column followed by conventional chromatography steps.
Note:	For testing in cell culture applications, please filter before use. Note that you may experience some loss of protein during the filtration process.
Storage:	Store at -80°C.
Stability:	Stable for 12 months from the date of receipt of the product under proper storage and handling conditions. Avoid repeated freeze-thaw cycles.
RefSeq:	NP_001139257
Locus ID:	100271849



[View online »](#)

UniProt ID: [Q02080](#)

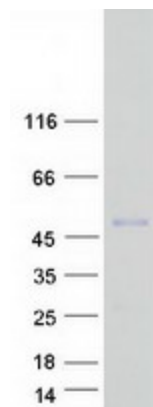
Cytogenetics: 19p13.11

RefSeq ORF: 1104

Synonyms: RSRFR2

Summary: The product of this gene is a member of the MADS/MEF2 family of DNA binding proteins. The protein is thought to regulate gene expression, including expression of the smooth muscle myosin heavy chain gene. This region undergoes considerable alternative splicing, with transcripts supporting two non-overlapping loci (GeneID 729991 and 100271849) as well as numerous read-through transcripts that span both loci (annotated as GeneID 4207). Several isoforms of this protein are expressed from either this locus or from some of the read-through transcripts annotated on GeneID 4207. [provided by RefSeq, Jan 2014]

Product images:



Coomassie blue staining of purified MEF2B protein (Cat# TP327214). The protein was produced from HEK293T cells transfected with MEF2B cDNA clone (Cat# [RC227214]) using MegaTran 2.0 (Cat# [TT210002]).