

## Product datasheet for TP327190M

### TOM1 (NM\_001135730) Human Recombinant Protein

#### Product data:

Product Type:	Recombinant Proteins
Description:	Recombinant protein of human target of myb1 (chicken) (TOM1), transcript variant 4, 100 µg
Species:	Human
Expression Host:	HEK293T
Expression cDNA Clone or AA Sequence:	>RC227190 representing NM_001135730 <b>Red</b> =Cloning site <b>Green</b> =Tags(s)
	<p>MDFLLGNPFSSPVGQRIEKATDGSLQSEDWALNMEICDIINETEEGPKDALRAVKKRIVGNKNFHEVMLA LTVLETVCVKNCGHRFHVLVASQDFVESVLVRTILPKNNPPTIVHDKVLNLIQTVFNSETQSGQDSVGTDS SQQEDSGQHAAPLPAPPILSGDTPAPTPEQIGKLRSELEMVSGNVRVMSEMLTELVTQAEPADLELLQ ELNRTCARAMQQRVLELIPQIANEQLTEELLIVNDNLNNVFLRHERFERFRTGQTTKAPSEAEPAADLIDM GPDPAATGNLSSQLAGMNLGSSSVRAGLQSLASGRLEDEFDMFALTRGSSLADQRKEVKYEAPQATDGL AGALDARQSTGAIPVTQAACLMEDIEQWLSTDVGNDAEPPKGVTSSEFDKFLEERAKAADRLPNLSSPSA EGPPGPPSGPAPRKKTKQEKDDDDMLFAL</p> <p><b>TRTRPLEQKLISEEDLAANDILDYKDDDDKV</b></p>
Tag:	C-Myc/DDK
Predicted MW:	48.5 kDa
Concentration:	>0.05 µg/µL as determined by microplate BCA method
Purity:	> 80% as determined by SDS-PAGE and Coomassie blue staining
Buffer:	25 mM Tris-HCl, 100 mM glycine, pH 7.3, 10% glycerol
Preparation:	Recombinant protein was captured through anti-DDK affinity column followed by conventional chromatography steps.
Note:	For testing in cell culture applications, please filter before use. Note that you may experience some loss of protein during the filtration process.
Storage:	Store at -80°C.
Stability:	Stable for 12 months from the date of receipt of the product under proper storage and handling conditions. Avoid repeated freeze-thaw cycles.
RefSeq:	<u><a href="#">NP_001129202</a></u>



[View online »](#)

Locus ID: 10043

UniProt ID: [O60784](#), [B3KUF5](#)

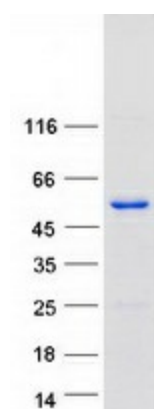
Cytogenetics: 22q12.3

RefSeq ORF: 1341

**Summary:** This gene was identified as a target of the v-myb oncogene. The encoded protein shares its N-terminal domain in common with proteins associated with vesicular trafficking at the endosome. It is recruited to the endosomes by its interaction with endofin. Several alternatively spliced transcript variants encoding different isoforms have been found for this gene. [provided by RefSeq, Oct 2008]

**Protein Families:** Druggable Genome

### Product images:



Coomassie blue staining of purified TOM1 protein (Cat# [TP327190]). The protein was produced from HEK293T cells transfected with TOM1 cDNA clone (Cat# [RC227190]) using MegaTran 2.0 (Cat# [TT210002]).