

## Product datasheet for **TP327093M**

### **RAB7L1 (RAB29) (NM\_001135662) Human Recombinant Protein**

#### **Product data:**

**Product Type:** Recombinant Proteins

**Description:** Recombinant protein of human RAB7, member RAS oncogene family-like 1 (RAB7L1), transcript variant 2, 100 µg

**Species:** Human

**Expression Host:** HEK293T

**Expression cDNA Clone or AA Sequence:** >RC227093 protein sequence  
**Red**=Cloning site **Green**=Tags(s)

MGSRDHLFKVLVVGDAAVGKTSLVQRYSDSFSKHYKSTVGVDFALKVLQWSDYEIVRLQLWDIAGQERF  
TSMTRLYYRDASACVIMFDVTNATTFNSQRWKQDLDSKLTLPNGEPVPCLLANKCDLSPWAVSRDQID  
RFSKENGFTGWTETSVKENKNINEAMRVLIEKMMRNSTEDIMSLSTQGDYINLQTKSSSWSCC

**TRTRPLEQKLISEEDLAANDILDYKDDDDKV**

**Tag:** C-Myc/DDK

**Predicted MW:** 23 kDa

**Concentration:** >0.05 µg/µL as determined by microplate BCA method

**Purity:** > 80% as determined by SDS-PAGE and Coomassie blue staining

**Buffer:** 25 mM Tris-HCl, 100 mM glycine, pH 7.3, 10% glycerol

**Preparation:** Recombinant protein was captured through anti-DDK affinity column followed by conventional chromatography steps.

**Note:** For testing in cell culture applications, please filter before use. Note that you may experience some loss of protein during the filtration process.

**Storage:** Store at -80°C.

**Stability:** Stable for 12 months from the date of receipt of the product under proper storage and handling conditions. Avoid repeated freeze-thaw cycles.

**RefSeq:** [NP\\_001129134](#)

**Locus ID:** 8934

**UniProt ID:** [O14966](#), [Q6FGU7](#), [B2R7I9](#)



[View online »](#)

RefSeq Size: 3223

Cytogenetics: 1q32.1

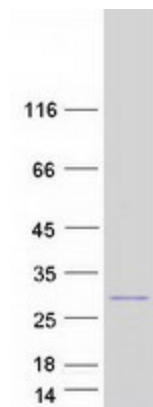
RefSeq ORF: 609

Synonyms: RAB7L; RAB7L1

**Summary:** Rab GTPase key regulator in vesicle trafficking. Essential for maintaining the integrity of the endosome-trans-Golgi network structure. Together with LRRK2, plays a role in the retrograde trafficking pathway for recycling proteins, such as mannose 6 phosphate receptor (M6PR), between lysosomes and the Golgi apparatus in a retromer-dependent manner. Regulates neuronal process morphology in the intact central nervous system (CNS). May play a role in the formation of typhoid toxin transport intermediates during *Salmonella enterica* serovar Typhi (S.Typhi) epithelial cell infection.[UniProtKB/Swiss-Prot Function]

**Protein Families:** Druggable Genome

### Product images:



Coomassie blue staining of purified RAB29 protein (Cat# [TP327093]). The protein was produced from HEK293T cells transfected with RAB29 cDNA clone (Cat# [RC227093]) using MegaTran 2.0 (Cat# [TT210002]).