

Product datasheet for **TP327093L**

RAB7L1 (RAB29) (NM_001135662) Human Recombinant Protein

Product data:

Product Type: Recombinant Proteins

Description: Recombinant protein of human RAB7, member RAS oncogene family-like 1 (RAB7L1), transcript variant 2, 1 mg

Species: Human

Expression Host: HEK293T

Expression cDNA Clone or AA Sequence: >RC227093 protein sequence
Red=Cloning site **Green**=Tags(s)

MGSRDHLFKVLVVGDAAVGKTSLVQRYSDSFSKHYKSTVGVDFAKVLQWSDYEIVRLQLWDIAGQERF
TSMTRLYYRDASACVIMFDVTNATTFNSQRWKQDLDSKLTLPNGEPVPCLLANKCDLSPWAVSRDQID
RFSKENGFTGWTETSVKENKNINEAMRVLIEKMMRNSTEDIMSLSTQGDIYINLQTKSSSWSCC

TRTRPLEQKLISEEDLAANDILDYKDDDDKV

Tag: C-Myc/DDK

Predicted MW: 23 kDa

Concentration: >0.05 µg/µL as determined by microplate BCA method

Purity: > 80% as determined by SDS-PAGE and Coomassie blue staining

Buffer: 25 mM Tris-HCl, 100 mM glycine, pH 7.3, 10% glycerol

Preparation: Recombinant protein was captured through anti-DDK affinity column followed by conventional chromatography steps.

Note: For testing in cell culture applications, please filter before use. Note that you may experience some loss of protein during the filtration process.

Storage: Store at -80°C.

Stability: Stable for 12 months from the date of receipt of the product under proper storage and handling conditions. Avoid repeated freeze-thaw cycles.

RefSeq: [NP_001129134](#)

Locus ID: 8934

UniProt ID: [O14966](#), [Q6FGU7](#), [B2R7I9](#)



[View online »](#)

RefSeq Size: 3223

Cytogenetics: 1q32.1

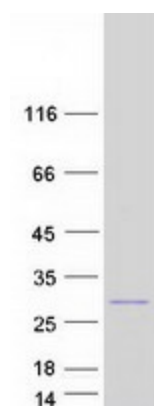
RefSeq ORF: 609

Synonyms: RAB7L; RAB7L1

Summary: Rab GTPase key regulator in vesicle trafficking. Essential for maintaining the integrity of the endosome-trans-Golgi network structure. Together with LRRK2, plays a role in the retrograde trafficking pathway for recycling proteins, such as mannose 6 phosphate receptor (M6PR), between lysosomes and the Golgi apparatus in a retromer-dependent manner. Regulates neuronal process morphology in the intact central nervous system (CNS). May play a role in the formation of typhoid toxin transport intermediates during *Salmonella enterica* serovar Typhi (S.Typhi) epithelial cell infection.[UniProtKB/Swiss-Prot Function]

Protein Families: Druggable Genome

Product images:



Coomassie blue staining of purified RAB29 protein (Cat# [TP327093]). The protein was produced from HEK293T cells transfected with RAB29 cDNA clone (Cat# [RC227093]) using MegaTran 2.0 (Cat# [TT210002]).