

## Product datasheet for **TP327083L**

### NEK6 (NM\_001145001) Human Recombinant Protein

#### Product data:

Product Type:	Recombinant Proteins
Description:	Recombinant protein of human NIMA (never in mitosis gene a)-related kinase 6 (NEK6), transcript variant 1, 1 mg
Species:	Human
Expression Host:	HEK293T
Expression cDNA Clone or AA Sequence:	>RC227083 representing NM_001145001 <b>Red</b> =Cloning site <b>Green</b> =Tags(s)
	<p>MPRREVCWEAAHFRQEEQSLPRPRVRALVRLACRMAGQPGHMPHGGSSNNLCHTLGPVHPPDPQRHPNTL SFRCSLADFQIEKKIGRGQFSEVYKATCLLDRKTVALKKVQIFEMMDAKARQDCVKEIGLLKQLNHPNII KYLDSFIEDNELNIVLELADAGDLSQMIKYFKKQKRLIPERTVWKYFVQLCSAVEHMSRRVMHRDIKPA NVFITATGVVKLGLDLGLGRFFSSETTAAHSLVGTPTYMSPERIHENGYNFKSDIWSLGCLLYEMAALQSP FYGDKMNLFSLCQKIEQCDYPPLPGEHYSEKLRRELVSMCICDPHQRPDIGYVHQVAKQMHIWMSST</p> <p><b>TRTRPLEQKLISEEDLAANDILDYKDDDDKV</b></p>
Tag:	C-Myc/DDK
Predicted MW:	39.7 kDa
Concentration:	>0.05 µg/µL as determined by microplate BCA method
Purity:	> 80% as determined by SDS-PAGE and Coomassie blue staining
Buffer:	25 mM Tris-HCl, 100 mM glycine, pH 7.3, 10% glycerol
Preparation:	Recombinant protein was captured through anti-DDK affinity column followed by conventional chromatography steps.
Note:	For testing in cell culture applications, please filter before use. Note that you may experience some loss of protein during the filtration process.
Storage:	Store at -80°C.
Stability:	Stable for 12 months from the date of receipt of the product under proper storage and handling conditions. Avoid repeated freeze-thaw cycles.
RefSeq:	<a href="#">NP_001138473</a>
Locus ID:	10783



[View online »](#)

UniProt ID: [Q9HC98](#)

Cytogenetics: 9q33.3

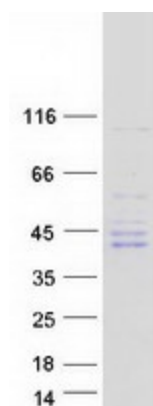
RefSeq ORF: 1041

Synonyms: SID6-1512

**Summary:** The protein encoded by this gene is a kinase required for progression through the metaphase portion of mitosis. Inhibition of the encoded protein can lead to apoptosis. This protein also can enhance tumorigenesis by suppressing tumor cell senescence. Several transcript variants encoding a few different isoforms have been found for this gene. [provided by RefSeq, Oct 2011]

**Protein Families:** Druggable Genome, Protein Kinase

### Product images:



Coomassie blue staining of purified NEK6 protein (Cat# [TP327083]). The protein was produced from HEK293T cells transfected with NEK6 cDNA clone (Cat# [RC227083]) using MegaTran 2.0 (Cat# [TT210002]).