

Product datasheet for **TP327045M**

FSD1L (NM_001145313) Human Recombinant Protein

Product data:

Product Type:	Recombinant Proteins
Description:	Recombinant protein of human fibronectin type III and SPRY domain containing 1-like (FSD1L), transcript variant 3, 100 µg
Species:	Human
Expression Host:	HEK293T
Expression cDNA Clone or AA Sequence:	>RC227045 representing NM_001145313 Red =Cloning site Green =Tags(s)

MDSQKYCFKENENVTVDKACFLISNITIGPESINLQQEALQRIISTLANKNDEIQNFIDTLHHTLKGVQE
NSSNILSELDEEFDSLILDEVKESMINCIKQEQARKSQELQSQISQCNNALENSEELLEFATRSLDIK
EPEEFKAARQIKDRVTMASAFRLSLKPKVSDNMTHLMVDFSQERQMLQTLKFLPVPKAPKPEIDPVECLVA
DNSVTVAWRMPEEDNKIDHFILEHRKTNFDGLPRVKDERCWEIIDNIKGTETLSGLKFDSKYMNFRVRA
CNKAVAGEYSDPVTLETALNFNLDNSSHLNLLKVEDTCVEWDPTGGKGQESKIKGKENKGRSGTPSPKR
TSVGSRPPAVRGRDRFTGESYTVLGDTAIESGQHYWEVKAQKDCSYSVGVAYKTLGKFDQLGKTNTSW
CIHVNWLQNTFAAKHNNKVKALDVTVPEKIGVFCDFDGGQLSFYDANSKQLLYSFKTKFTQPVLPGFMV
WCGGLSLSTGMQVPSAVRTLQKSENGMTGSASSLNNVWTQ

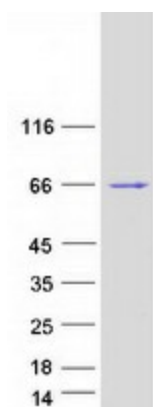
TRTRPLEQKLISEEDLAANDILDYKDDDDKV

Tag:	C-Myc/DDK
Predicted MW:	59.4 kDa
Concentration:	>0.05 µg/µL as determined by microplate BCA method
Purity:	> 80% as determined by SDS-PAGE and Coomassie blue staining
Buffer:	25 mM Tris-HCl, 100 mM glycine, pH 7.3, 10% glycerol
Preparation:	Recombinant protein was captured through anti-DDK affinity column followed by conventional chromatography steps.
Note:	For testing in cell culture applications, please filter before use. Note that you may experience some loss of protein during the filtration process.
Storage:	Store at -80°C.



[View online »](#)

Stability:	Stable for 12 months from the date of receipt of the product under proper storage and handling conditions. Avoid repeated freeze-thaw cycles.
RefSeq:	NP_001138785
Locus ID:	83856
UniProt ID:	Q9BXM9 , Q8N450
Cytogenetics:	9q31.2
RefSeq ORF:	1590
Synonyms:	CCDC10; CSDUFD1; FSD1CL; FSD1NL; MIR1

Product images:

Coomassie blue staining of purified FSD1L protein (Cat# [TP327045]). The protein was produced from HEK293T cells transfected with FSD1L cDNA clone (Cat# [RC227045]) using MegaTran 2.0 (Cat# [TT210002]).