

## Product datasheet for **TP326988L**

### Parvin gamma (PARVG) (NM\_001137605) Human Recombinant Protein

#### Product data:

**Product Type:** Recombinant Proteins

**Description:** Recombinant protein of human parvin, gamma (PARVG), transcript variant 2, 1 mg

**Species:** Human

**Expression Host:** HEK293T

**Expression cDNA Clone  
or AA Sequence:** >RC226988 protein sequence  
**Red**=Cloning site **Green**=Tags(s)

MEPEFLYDLLQLPKGVEPPAAEEELSKGGKKKYLPPTS RKDPKFEELQKVLMEWINATLLPEHIVVRSLEE  
DMFDGLILHHLFQRLAALKLEAEDIALTATSQKHKLTWLEAVNRS LQLEEWQAKWSVESIFNKDLLSTL  
HLLVALAKRFQPDLSLPTNVQVEVITIESTKSGLKSEKLVEQLTEYSTDKDEPPKDVDELFLKLAPEKVN  
AVKEAIVNFVNQKLDRLGLSVQNLDTQFADGVILLLLIGQLLEGFFLHLKEFYLT PNPSPAEMLHNVTLAL E  
LLKDEGLLSCPVPEDIVNKDAKSTLRVLYGLFCKHTQKAHRDRTPHGAPN

**TRTRPLEQKLISEEDLAANDILDYKDDDDKV**

**Tag:** C-Myc/DDK

**Predicted MW:** 37.3 kDa

**Concentration:** >0.05 µg/µL as determined by microplate BCA method

**Purity:** > 80% as determined by SDS-PAGE and Coomassie blue staining

**Buffer:** 25 mM Tris-HCl, 100 mM glycine, pH 7.3, 10% glycerol

**Preparation:** Recombinant protein was captured through anti-DDK affinity column followed by conventional chromatography steps.

**Note:** For testing in cell culture applications, please filter before use. Note that you may experience some loss of protein during the filtration process.

**Storage:** Store at -80°C.

**Stability:** Stable for 12 months from the date of receipt of the product under proper storage and handling conditions. Avoid repeated freeze-thaw cycles.

**RefSeq:** [NP\\_001131077](#)

**Locus ID:** 64098



[View online »](#)

UniProt ID: [Q9HBIO](#), [A0A024R4U4](#)

RefSeq Size: 3475

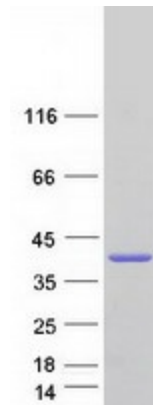
Cytogenetics: 22q13.31

RefSeq ORF: 993

**Summary:** Members of the parvin family, including PARVG, are actin-binding proteins associated with focal contacts.[supplied by OMIM, Aug 2004]

**Protein Pathways:** Adherens junction, Arrhythmogenic right ventricular cardiomyopathy (ARVC), Dilated cardiomyopathy, Focal adhesion, Hypertrophic cardiomyopathy (HCM), Leukocyte transendothelial migration, Pathogenic Escherichia coli infection, Regulation of actin cytoskeleton, Tight junction, Vibrio cholerae infection, Viral myocarditis

### Product images:



Coomassie blue staining of purified PARVG protein (Cat# [TP326988]). The protein was produced from HEK293T cells transfected with PARVG cDNA clone (Cat# [RC226988]) using MegaTran 2.0 (Cat# [TT210002]).