

## Product datasheet for **TP326908L**

### SAE1 (NM\_001145713) Human Recombinant Protein

#### Product data:

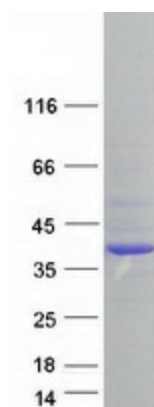
Product Type:	Recombinant Proteins
Description:	Purified recombinant protein of Homo sapiens SUMO1 activating enzyme subunit 1 (SAE1), transcript variant 2, 1 mg
Species:	Human
Expression Host:	HEK293T
Expression cDNA Clone or AA Sequence:	>RC226908 representing NM_001145713 <b>Red</b> =Cloning site <b>Green</b> =Tags(s)
	MVEKEEAGGGISEEEAAQYDRQIRLWGLEAQKRLRASRVLLVGLKGLGAEIAKNLILAGVKGLTMLDHEQ VTPEDPGAQFLIRTGSVGRNRAEASLERAQNLNPMVDVKVDTEIEKKPESFFTQFDAVCLTCCSRDVI KVDQICHKNSIKFFTGDVFGYHGTYFANLGEHEFVVEEKTQVAKVSQGVEDGPDTKRAKLDSETTMVKKK VWFCPVKEALEVDWSSEKAKAALKRTTSDYFLLQGPVSAGPSSQQLLLLRWHEGEWDCGVPWPQVNSRFG SPRDANCSMPTCIPCPLPS
	<b>TRTRPLEQKLISEEDLAANDILDYKDDDDKV</b>
Tag:	C-Myc/DDK
Predicted MW:	32.9 kDa
Concentration:	>0.05 µg/µL as determined by microplate BCA method
Purity:	> 80% as determined by SDS-PAGE and Coomassie blue staining
Buffer:	25 mM Tris-HCl, 100 mM glycine, pH 7.3, 10% glycerol
Preparation:	Recombinant protein was captured through anti-DDK affinity column followed by conventional chromatography steps.
Note:	For testing in cell culture applications, please filter before use. Note that you may experience some loss of protein during the filtration process.
Storage:	Store at -80°C.
Stability:	Stable for 12 months from the date of receipt of the product under proper storage and handling conditions. Avoid repeated freeze-thaw cycles.
RefSeq:	<u><a href="#">NP_001139185</a></u>
Locus ID:	10055



[View online »](#)

UniProt ID:	<a href="#">Q9UBE0</a>
Cytogenetics:	19q13.32
RefSeq ORF:	897
Synonyms:	AOS1; HSPC140; SUA1; UBLE1A
Summary:	Posttranslational modification of proteins by the addition of the small protein SUMO (see SUMO1; MIM 601912), or sumoylation, regulates protein structure and intracellular localization. SAE1 and UBA2 (MIM 613295) form a heterodimer that functions as a SUMO-activating enzyme for the sumoylation of proteins (Okuma et al., 1999 [PubMed 9920803]). [supplied by OMIM, Mar 2010]
Protein Pathways:	Ubiquitin mediated proteolysis

### Product images:



Coomassie blue staining of purified SAE1 protein (Cat# [TP326908]). The protein was produced from HEK293T cells transfected with SAE1 cDNA clone (Cat# [RC226908]) using MegaTran 2.0 (Cat# [TT210002]).