

## Product datasheet for **TP326833L**

### **RNASEH2B (NM\_001142279) Human Recombinant Protein**

#### Product data:

Product Type:	Recombinant Proteins
Description:	Recombinant protein of human ribonuclease H2, subunit B (RNASEH2B), transcript variant 2, 1 mg
Species:	Human
Expression Host:	HEK293T
Expression cDNA Clone or AA Sequence:	>RC226833 representing NM_001142279 <b>Red</b> =Cloning site <b>Green</b> =Tags(s)

MAAGVDCGDGVGARQHVFLVSEYLDASKKMKNGLMFVKLVNPCSGEGAIYLFNMCLQQLFEVKVFKEKH  
HSWFINQSVQSGLLHFATPVDPLFLLHLYLIKADKEGKFQPLDQVVDNVFPNCILLKLPGLEKLLHH  
VTEEKGNPEIDNKYYKYSKEKTLKWLEKKVNQTVAAALKTNVNVSSRVQSTAFFSGDQASTDKEEDYIR  
YAHGLISDYIPKELSDDLLSKYLKLEPSASLPNPPSKMAAQRQKR GK

**TRTRPLEQKLISEEDLAANDILDYKDDDDKV**

Tag:	C-Myc/DDK
Predicted MW:	28.8 kDa
Concentration:	>0.05 µg/µL as determined by microplate BCA method
Purity:	> 80% as determined by SDS-PAGE and Coomassie blue staining
Buffer:	25 mM Tris-HCl, 100 mM glycine, pH 7.3, 10% glycerol
Preparation:	Recombinant protein was captured through anti-DDK affinity column followed by conventional chromatography steps.
Note:	For testing in cell culture applications, please filter before use. Note that you may experience some loss of protein during the filtration process.
Storage:	Store at -80°C.
Stability:	Stable for 12 months from the date of receipt of the product under proper storage and handling conditions. Avoid repeated freeze-thaw cycles.
RefSeq:	<a href="#">NP_001135751</a>
Locus ID:	79621



[View online »](#)

UniProt ID: [Q5TBB1](#)

Cytogenetics: 13q14.3

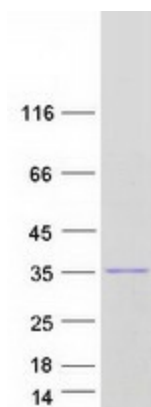
RefSeq ORF: 771

Synonyms: AGS2; DLEU8

**Summary:** RNase H2 is composed of a single catalytic subunit (A) and two non-catalytic subunits (B and C) and specifically degrades the RNA of RNA:DNA hybrids. The protein encoded by this gene is the non-catalytic B subunit of RNase H2, which is thought to play a role in DNA replication. Multiple transcript variants encoding different isoforms have been found for this gene. Defects in this gene are a cause of Aicardi-Goutieres syndrome type 2 (AGS2). [provided by RefSeq, Nov 2008]

**Protein Pathways:** DNA replication

### Product images:



Coomassie blue staining of purified RNASEH2B protein (Cat# [TP326833]). The protein was produced from HEK293T cells transfected with RNASEH2B cDNA clone (Cat# [RC226833]) using MegaTran 2.0 (Cat# [TT210002]).