

## Product datasheet for **TP326798**

### **MTHFD2 (MTHFD2L) (NM\_001144978) Human Recombinant Protein**

#### Product data:

Product Type:	Recombinant Proteins
Description:	Recombinant protein of human methylenetetrahydrofolate dehydrogenase (NADP+ dependent) 2-like (MTHFD2L), 20 µg
Species:	Human
Expression Host:	HEK293T
Expression cDNA Clone or AA Sequence:	>RC226798 representing NM_001144978 <b>Red</b> =Cloning site <b>Green</b> =Tags(s)

MTVPVRGFSLLRGRALGRSTAPSVRAPGEPGSAFRGFRSSGVRHEAIIISGTEMAKHIQKEIQRG  
VESWVSLGNRRPHLSIILVGDNPASHTYVRNKIRAASAVGICSELILKPKDVSQEELLDVTDQLNMDPRV  
SGILVQLPLPDHVDERTICNGIAPEKDVDGFHIIINIGRLCLDQHSLIPATASAVWEIIRTKGIQTFGKNV  
VVAGRSKNVGMPIAMLLHTDGEHERPGGDATVTIAHRYTPKEQLKIHTQLADIIIIVAAGIPKLITSDMVK  
EGAAVIDVGINYVHDPVTGKTKLVGDVDFEAVKKKAGFITPVPGGVGPMTVAMLLKNTLLAAKKIY

**TRTRPLEQKLISEEDLAANDILDYKDDDDKV**

Tag:	C-Myc/DDK
Predicted MW:	37.1 kDa
Concentration:	>0.05 µg/µL as determined by microplate BCA method
Purity:	> 80% as determined by SDS-PAGE and Coomassie blue staining
Buffer:	25 mM Tris-HCl, 100 mM glycine, pH 7.3, 10% glycerol
Preparation:	Recombinant protein was captured through anti-DDK affinity column followed by conventional chromatography steps.
Note:	For testing in cell culture applications, please filter before use. Note that you may experience some loss of protein during the filtration process.
Storage:	Store at -80°C.
Stability:	Stable for 12 months from the date of receipt of the product under proper storage and handling conditions. Avoid repeated freeze-thaw cycles.
RefSeq:	<u><a href="#">NP_001138450</a></u>
Locus ID:	441024



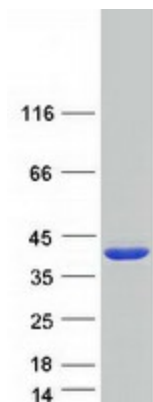
[View online »](#)

UniProt ID: [Q9H903](#)

Cytogenetics: 4q13.3

RefSeq ORF: 1041

### Product images:



Coomassie blue staining of purified MTHFD2L protein (Cat# TP326798). The protein was produced from HEK293T cells transfected with MTHFD2L cDNA clone (Cat# [RC226798]) using MegaTran 2.0 (Cat# [TT210002]).