

Product datasheet for TP326791M

FLYWCH2 (NM_001142500) Human Recombinant Protein

Product data:

Product Type:	Recombinant Proteins
Description:	Recombinant protein of human FLYWCH family member 2 (FLYWCH2), transcript variant 3, 100 µg
Species:	Human
Expression Host:	HEK293T
Expression cDNA Clone or AA Sequence:	>RC226791 protein sequence Red=Cloning site Green=Tags(s)

MPLPEPSEQEGESVKASQEPSKPGTEVIPAAPRKPRKFSKLVLLTASKDSTKVAGAKRKGVHCVMSLGV
PGPATLAKALLQTHPEAQRAIEAAPQEPEQKRSRQDPGTDRTEDSGLAAGPPEAAGENFAPCSVAPGKSL

TRTRPLEQKLISEEDLAANDILDYKDDDDKV

Tag:	C-Myc/DDK
Predicted MW:	14.4 kDa
Concentration:	>0.05 µg/µL as determined by microplate BCA method
Purity:	> 80% as determined by SDS-PAGE and Coomassie blue staining
Buffer:	25 mM Tris-HCl, 100 mM glycine, pH 7.3, 10% glycerol
Preparation:	Recombinant protein was captured through anti-DDK affinity column followed by conventional chromatography steps.
Note:	For testing in cell culture applications, please filter before use. Note that you may experience some loss of protein during the filtration process.
Storage:	Store at -80°C.
Stability:	Stable for 12 months from the date of receipt of the product under proper storage and handling conditions. Avoid repeated freeze-thaw cycles.
RefSeq:	<u>NP_001135972</u>
Locus ID:	114984
UniProt ID:	<u>Q96CP2</u>
RefSeq Size:	1040

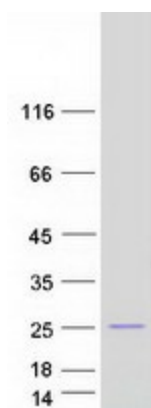


[View online »](#)

Cytogenetics: 16p13.3

RefSeq ORF: 420

Product images:



Coomassie blue staining of purified FLYWCH2 protein (Cat# [TP326791]). The protein was produced from HEK293T cells transfected with FLYWCH2 cDNA clone (Cat# [RC226791]) using MegaTran 2.0 (Cat# [TT210002]).