

Product datasheet for **TP326779L**

EB2 (MAPRE2) (NM_001143827) Human Recombinant Protein

Product data:

Product Type:	Recombinant Proteins
Description:	Purified recombinant protein of Homo sapiens microtubule-associated protein, RP/EB family, member 2 (MAPRE2), transcript variant 3, 1 mg
Species:	Human
Expression Host:	HEK293T
Expression cDNA Clone or AA Sequence:	>RC226779 representing NM_001143827 Red =Cloning site Green =Tags(s)
	MKQNRDQKCPVSQRNSSFQQPGRKPGCSSWGMVAVNVYSTSITQETMSRHDIIAWVNDIVSLNYTKVEQLC SGAAYCQFMDMLFPGCISLKKVKFQAKLEHEYIHNFKLLQASFKRMNVDKVIPVEKLVKGRFQDNLDFIQ WFKKFYDANYDGKEYDPVEARQGQDAIPPPDPGEQIFNLPKSSHANSPTAGAAKSSPAKPGSTPSRPS SAKRASSSGSASKSDKDLETQVIQLNEQVHSLKLALEGVEKERDFYFGKLRREIELLCQEHGQENDDLVR LMDILYASEEHEGHTEPEAEEQAHEQQPPQEEY
	TRTRPLEQKLISEEDLAANDILDYKDDDDKV
Tag:	C-Myc/DDK
Predicted MW:	35.6 kDa
Concentration:	>0.05 µg/µL as determined by microplate BCA method
Purity:	> 80% as determined by SDS-PAGE and Coomassie blue staining
Buffer:	25 mM Tris-HCl, 100 mM glycine, pH 7.3, 10% glycerol
Preparation:	Recombinant protein was captured through anti-DDK affinity column followed by conventional chromatography steps.
Note:	For testing in cell culture applications, please filter before use. Note that you may experience some loss of protein during the filtration process.
Storage:	Store at -80°C.
Stability:	Stable for 12 months from the date of receipt of the product under proper storage and handling conditions. Avoid repeated freeze-thaw cycles.
RefSeq:	<u>NP_001137299</u>
Locus ID:	10982



[View online »](#)

UniProt ID: [Q15555](#)

Cytogenetics: 18q12.1-q12.2

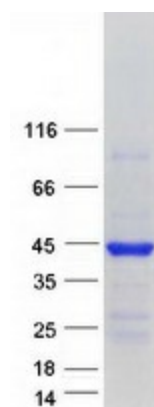
RefSeq ORF: 945

Synonyms: CSCSC2; EB1; EB2; RP1

Summary: The protein encoded by this gene shares significant homology to the adenomatous polyposis coli (APC) protein-binding EB1 gene family. This protein is a microtubule-associated protein that is necessary for spindle symmetry during mitosis. It is thought to play a role in the tumorigenesis of colorectal cancers and the proliferative control of normal cells. Alternative splicing of this gene results in multiple transcript variants. [provided by RefSeq, Jan 2012]

Protein Families: Druggable Genome

Product images:



Coomassie blue staining of purified MAPRE2 protein (Cat# [TP326779]). The protein was produced from HEK293T cells transfected with MAPRE2 cDNA clone (Cat# [RC226779]) using MegaTran 2.0 (Cat# [TT210002]).