

## Product datasheet for **TP326779**

### **EB2 (MAPRE2) (NM\_001143827) Human Recombinant Protein**

#### **Product data:**

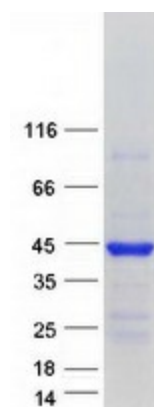
<b>Product Type:</b>	Recombinant Proteins
<b>Description:</b>	Purified recombinant protein of Homo sapiens microtubule-associated protein, RP/EB family, member 2 (MAPRE2), transcript variant 3, 20 µg
<b>Species:</b>	Human
<b>Expression Host:</b>	HEK293T
<b>Expression cDNA Clone or AA Sequence:</b>	>RC226779 representing NM_001143827 <b>Red</b> =Cloning site <b>Green</b> =Tags(s)  MKQNRDQKCPVSQRNSSFQQPGRKPGCSSWGMVNVYSTSITQETMSRHDIIAWVNDIVSLNYTKVEQLC SGAAYCQFMDMLFPGCISLKKVKFQAKLEHEYIHNFKLLQASFKRMNVDKVIPVEKLVKGRFQDNLDFIQ WFKKFYDANYDGKEYDPVEARQGQDAIPPPDPGEQIFNLPKSSHANSPTAGAAKSSPAKPGSTPSRPS SAKRASSSGSASKSDKDLETQVIQLNEQVHSLKLALEGVEKERDFYFGKLRREIELLCQEHGQENDDLVR LMDILYASEEHEGHTEEPEAEEQAHEQPPQEEY  <b>TRTRPLEQKLISEEDLAANDILDYKDDDDKV</b>
<b>Tag:</b>	C-Myc/DDK
<b>Predicted MW:</b>	35.6 kDa
<b>Concentration:</b>	>0.05 µg/µL as determined by microplate BCA method
<b>Purity:</b>	> 80% as determined by SDS-PAGE and Coomassie blue staining
<b>Buffer:</b>	25 mM Tris-HCl, 100 mM glycine, pH 7.3, 10% glycerol
<b>Preparation:</b>	Recombinant protein was captured through anti-DDK affinity column followed by conventional chromatography steps.
<b>Note:</b>	For testing in cell culture applications, please filter before use. Note that you may experience some loss of protein during the filtration process.
<b>Storage:</b>	Store at -80°C.
<b>Stability:</b>	Stable for 12 months from the date of receipt of the product under proper storage and handling conditions. Avoid repeated freeze-thaw cycles.
<b>RefSeq:</b>	<u><a href="#">NP_001137299</a></u>
<b>Locus ID:</b>	10982



[View online »](#)

UniProt ID:	<a href="#">Q15555</a>
Cytogenetics:	18q12.1-q12.2
RefSeq ORF:	945
Synonyms:	CSCSC2; EB1; EB2; RP1
Summary:	The protein encoded by this gene shares significant homology to the adenomatous polyposis coli (APC) protein-binding EB1 gene family. This protein is a microtubule-associated protein that is necessary for spindle symmetry during mitosis. It is thought to play a role in the tumorigenesis of colorectal cancers and the proliferative control of normal cells. Alternative splicing of this gene results in multiple transcript variants. [provided by RefSeq, Jan 2012]
Protein Families:	Druggable Genome

### Product images:



Coomassie blue staining of purified MAPRE2 protein (Cat# TP326779). The protein was produced from HEK293T cells transfected with MAPRE2 cDNA clone (Cat# [RC226779]) using MegaTran 2.0 (Cat# [TT210002]).