

## Product datasheet for **TP326770**

### **Nkx2.6 (NKX2-6) (NM\_001136271) Human Recombinant Protein**

#### **Product data:**

Product Type:	Recombinant Proteins
Description:	Purified recombinant protein of Homo sapiens NK2 transcription factor related, locus 6 (Drosophila) (NKX2-6), 20 µg
Species:	Human
Expression Host:	HEK293T
Expression cDNA Clone or AA Sequence:	>RC226770 representing NM_001136271 <b>Red</b> =Cloning site <b>Green</b> =Tags(s)  MDAERMGEPQPGLNAASPLGGGTRVPERGVGNSGDSVRGGRSEQPKARQRRKPRVLFSQAQVLALERR FK QQRYSAPEREHLASALQLTSTQVKIWFQNRKYCKRQRQDKSLELAGHPLTPRRVAVPVLVRDGGKPCLG PGPGAPAFPSYSAVSPYSCYGGYSGAPYGAGYGTCTYAGAPSGPAPHTPLASAGFGHGGQNATPQGH LA ATLQGVRAW  <b>TRTRPLEQKLISEEDLAANDILDYKDDDDKV</b>
Tag:	C-Myc/DDK
Predicted MW:	23.1 kDa
Concentration:	>0.05 µg/µL as determined by microplate BCA method
Purity:	> 80% as determined by SDS-PAGE and Coomassie blue staining
Buffer:	25 mM Tris-HCl, 100 mM glycine, pH 7.3, 10% glycerol
Preparation:	Recombinant protein was captured through anti-DDK affinity column followed by conventional chromatography steps.
Note:	For testing in cell culture applications, please filter before use. Note that you may experience some loss of protein during the filtration process.
Storage:	Store at -80°C.
Stability:	Stable for 12 months from the date of receipt of the product under proper storage and handling conditions. Avoid repeated freeze-thaw cycles.
RefSeq:	<u><a href="#">NP_001129743</a></u>
Locus ID:	137814



[View online »](#)

UniProt ID: [A6NCS4](#)

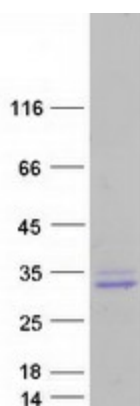
Cytogenetics: 8p21.2

RefSeq ORF: 657

Synonyms: CSX2; CTHM; NKX2F; NKX4-2

**Summary:** This gene encodes a homeobox-containing protein that belongs to the NK-2 homeobox family. This protein is a vertebrate homolog of Drosophila homeobox-containing protein called 'tinman', which has been shown to be essential for development of the heart-like dorsal vessel. In conjunction with related gene, NKX2-5, this gene may play a role in both pharyngeal and cardiac embryonic development. Mutations in this gene are associated with persistent truncus arteriosus.[provided by RefSeq, Aug 2011]

## Product images:



Coomassie blue staining of purified NKX2-6 protein (Cat# TP326770). The protein was produced from HEK293T cells transfected with NKX2-6 cDNA clone (Cat# [RC226770]) using MegaTran 2.0 (Cat# [TT210002]).