

Product datasheet for **TP326740M**

KCTD1 (NM_001136205) Human Recombinant Protein

Product data:

Product Type: Recombinant Proteins
Description: Recombinant protein of human potassium channel tetramerisation domain containing 1 (KCTD1), transcript variant 1, 100 µg

Species: Human

Expression Host: HEK293T

Expression cDNA Clone or AA Sequence: >RC226740 protein sequence
Red=Cloning site **Green**=Tags(s)

MSRPLITRSPASPLNNQGIPTPAQLTKSNAPVHIDVGGHMYTSSLATLTYPESRIGRLFDGTEPIVLDS
LKQHYFIDRDGQMFYILNFLRTSKLLIPDDFKDYTLLEYEAKYFQLQPMLLEMERWKQDRETGRFSRPG
ECLVVRVAPDLGERITLSGDKSLIEEVFPEIGDVMCNSVNAGWNHDSSTHVIRFPLNGYCHLNSVQVLERL
QQRGFEIVGSCGGGVDSQFSEYVLRRELRRTPRVPSVIRIKQEPLD

TRTRPLEQKLISEEDLAANDILDYKDDDDKV

Tag: C-Myc/DDK

Predicted MW: 29.2 kDa

Concentration: >0.05 µg/µL as determined by microplate BCA method

Purity: > 80% as determined by SDS-PAGE and Coomassie blue staining

Buffer: 25 mM Tris-HCl, 100 mM glycine, pH 7.3, 10% glycerol

Preparation: Recombinant protein was captured through anti-DDK affinity column followed by conventional chromatography steps.

Note: For testing in cell culture applications, please filter before use. Note that you may experience some loss of protein during the filtration process.

Storage: Store at -80°C.

Stability: Stable for 12 months from the date of receipt of the product under proper storage and handling conditions. Avoid repeated freeze-thaw cycles.

RefSeq: [NP_001129677](#)

Locus ID: 284252



[View online »](#)

UniProt ID: [Q719H9](#), [A0A024RC45](#)

RefSeq Size: 2174

Cytogenetics: 18q11.2

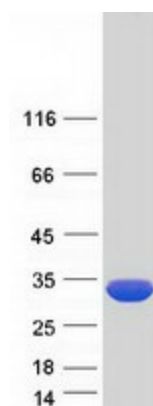
RefSeq ORF: 771

Synonyms: C18orf5

Summary: This gene encodes a protein containing a BTB (Broad-complex, tramtrack and bric a brac), also known as a POZ (POxvirus and zinc finger) protein-protein interaction domain. The encoded protein negatively regulates the AP-2 family of transcription factors and the Wnt signaling pathway. A mechanism for the modulation of Wnt signaling has been proposed in which the encoded protein enhances ubiquitination and degradation of the beta-catenin protein. Mutations in this gene have been identified in Scalp-ear-nipple (SEN) syndrome. [provided by RefSeq, May 2017]

Protein Families: Ion Channels: Other

Product images:



Coomassie blue staining of purified KCTD1 protein (Cat# [TP326740]). The protein was produced from HEK293T cells transfected with KCTD1 cDNA clone (Cat# [RC226740]) using MegaTran 2.0 (Cat# [TT210002]).