

Product datasheet for TP326740L

KCTD1 (NM_001136205) Human Recombinant Protein

Product data:

Product Type:	Recombinant Proteins
Description:	Recombinant protein of human potassium channel tetramerisation domain containing 1 (KCTD1), transcript variant 1, 1 mg
Species:	Human
Expression Host:	HEK293T
Expression cDNA Clone or AA Sequence:	>RC226740 protein sequence Red =Cloning site Green =Tags(s)
	 MSRPLITRSPASPLNNQGIPTPAQLTKSNAPVHIDVGGHMYTSSLATLTKYPESRIGRLFDGTEPIVLDS LKQHYFIDRDGQMFYILNFLRTSKLLIPDDFKDYTLLEYEAKYFQLQPMLLEMERWKQDRETGRFSRPC ECLVVRVAPDLGERITLSGDKSLIEEVFPEIGDVMCNSVNAGWNHDSTHVIRFPLNGYCHLNSVQVLERL QQRGFEIVGSCGGGVDSQFSEYVLRRELRRTPRVPSVIRIKQEPLD TRTRPLEQKLISEEDLAANDILDYKDDDDKV
Tag:	C-Myc/DDK
Predicted MW:	29.2 kDa
Concentration:	>0.05 µg/µL as determined by microplate BCA method
Purity:	> 80% as determined by SDS-PAGE and Coomassie blue staining
Buffer:	25 mM Tris-HCl, 100 mM glycine, pH 7.3, 10% glycerol
Preparation:	Recombinant protein was captured through anti-DDK affinity column followed by conventional chromatography steps.
Note:	For testing in cell culture applications, please filter before use. Note that you may experience some loss of protein during the filtration process.
Storage:	Store at -80°C.
Stability:	Stable for 12 months from the date of receipt of the product under proper storage and handling conditions. Avoid repeated freeze-thaw cycles.
RefSeq:	NP_001129677
Locus ID:	284252



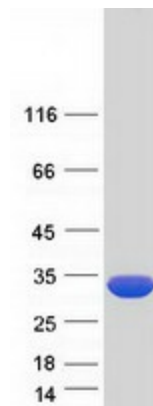
[View online »](#)

UniProt ID: [Q719H9](#), [A0A024RC45](#)
RefSeq Size: 2174
Cytogenetics: 18q11.2
RefSeq ORF: 771
Synonyms: C18orf5

Summary: This gene encodes a protein containing a BTB (Broad-complex, tramtrack and bric a brac), also known as a POZ (POxvirus and zinc finger) protein-protein interaction domain. The encoded protein negatively regulates the AP-2 family of transcription factors and the Wnt signaling pathway. A mechanism for the modulation of Wnt signaling has been proposed in which the encoded protein enhances ubiquitination and degradation of the beta-catenin protein. Mutations in this gene have been identified in Scalp-ear-nipple (SEN) syndrome. [provided by RefSeq, May 2017]

Protein Families: Ion Channels: Other

Product images:



Coomassie blue staining of purified KCTD1 protein (Cat# [TP326740]). The protein was produced from HEK293T cells transfected with KCTD1 cDNA clone (Cat# [RC226740]) using MegaTran 2.0 (Cat# [TT210002]).