

Product datasheet for TP326732

FLYWCH2 (NM_001142499) Human Recombinant Protein

Product data:

| | |
|---------------------------------------|---|
| Product Type: | Recombinant Proteins |
| Description: | Recombinant protein of human FLYWCH family member 2 (FLYWCH2), transcript variant 2, 20 µg |
| Species: | Human |
| Expression Host: | HEK293T |
| Expression cDNA Clone or AA Sequence: | >RC226732 protein sequence Red=Cloning site Green=Tags(s) |
| | MPLPEPSEQEGESVKASQEPSKPGTEVIPAAPRKPRKFSKLVLLTASKDSTKVAGAKRKGVHCVMISLGV PGPATLAKALLQTHPEAQRAIEAAPQEPEQKRSRQDPGTDRTEDSGLAAGPPEAAGENFAPCSVAPGKSL TRTRPLEQKLISEEDLAANDILDYKDDDDKV |
| Tag: | C-Myc/DDK |
| Predicted MW: | 14.4 kDa |
| Concentration: | >0.05 µg/µL as determined by microplate BCA method |
| Purity: | > 80% as determined by SDS-PAGE and Coomassie blue staining |
| Buffer: | 25 mM Tris-HCl, 100 mM glycine, pH 7.3, 10% glycerol |
| Preparation: | Recombinant protein was captured through anti-DDK affinity column followed by conventional chromatography steps. |
| Note: | For testing in cell culture applications, please filter before use. Note that you may experience some loss of protein during the filtration process. |
| Storage: | Store at -80°C. |
| Stability: | Stable for 12 months from the date of receipt of the product under proper storage and handling conditions. Avoid repeated freeze-thaw cycles. |
| RefSeq: | <u>NP_001135971</u> |
| Locus ID: | 114984 |
| UniProt ID: | <u>Q96CP2</u> |
| RefSeq Size: | 950 |

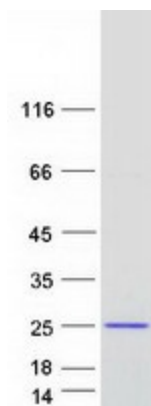


[View online »](#)

Cytogenetics: 16p13.3

RefSeq ORF: 420

Product images:



Coomassie blue staining of purified FLYWCH2 protein (Cat# TP326732). The protein was produced from HEK293T cells transfected with FLYWCH2 cDNA clone (Cat# [RC226732]) using MegaTran 2.0 (Cat# [TT210002]).