

## Product datasheet for **TP326704**

### **GDNF Receptor alpha 1 (GFRA1) (NM\_001145453) Human Recombinant Protein**

#### **Product data:**

<b>Product Type:</b>	Recombinant Proteins
<b>Description:</b>	Recombinant protein of human GDNF family receptor alpha 1 (GFRA1), transcript variant 3, 20 µg
<b>Species:</b>	Human
<b>Expression Host:</b>	HEK293T
<b>Expression cDNA Clone or AA Sequence:</b>	>RC226704 representing NM_001145453 <b>Red</b> =Cloning site <b>Green</b> =Tags(s)

MFLATLYFALPLDLLLSAEVSGGDRLDCVKASDQCLKEQSCSTKYRTLRLQCVAGKETNFSLASGLEAKD  
ECRSAMEALKQKSLYNCRCKRGMKKEKNCLRIYWSMYQSLQGNDLLEDSPYEPVNSRLSDIFRVVPPFISV  
EHIPKGNCLDAKACNLDDICKKYRSAYITPCTTSVSNVNCNRRKCHKALRQFFDKVPAKHSYGMLFCS  
CRDIACTERRRQTIVPVCSYEEREKPNCLNLQDSCKTNYICRSRLADFFTNCPESRSVSSCLKENYADC  
LLAYSGLIGTVMTPNYIDSSLSVAPWCDCSNSGNDLEECLKFLNFFKDNTCLKNAIQAFNGSDVTVWQ  
PAFPVQTTTATTTALRVKNKPLGPAGSENIPTHVLPSCANLQAQKLKSNVSGNTHLCISNGNYEKEGL  
GASSHITTKSMAAPPSCGLSPLLVLVTALSTLLSLTETS

**TRTRPLEQKLISEEDLAANDILDYKDDDDKV**

<b>Tag:</b>	C-Myc/DDK
<b>Predicted MW:</b>	48.3 kDa
<b>Concentration:</b>	>0.05 µg/µL as determined by microplate BCA method
<b>Purity:</b>	> 80% as determined by SDS-PAGE and Coomassie blue staining
<b>Buffer:</b>	25 mM Tris-HCl, 100 mM glycine, pH 7.3, 10% glycerol
<b>Preparation:</b>	Recombinant protein was captured through anti-DDK affinity column followed by conventional chromatography steps.
<b>Note:</b>	For testing in cell culture applications, please filter before use. Note that you may experience some loss of protein during the filtration process.
<b>Storage:</b>	Store at -80°C.
<b>Stability:</b>	Stable for 12 months from the date of receipt of the product under proper storage and handling conditions. Avoid repeated freeze-thaw cycles.



[View online »](#)

RefSeq: [NP\\_001138925](#)

Locus ID: 2674

UniProt ID: [P56159](#)

Cytogenetics: 10q25.3

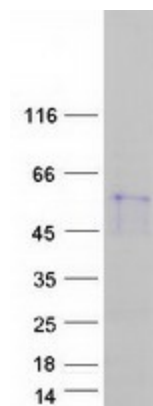
RefSeq ORF: 1380

Synonyms: GDNFR; GDNFRA; GFR-ALPHA-1; GFRalpha-1; RET1L; RETL1; TRNR1

**Summary:** This gene encodes a member of the glial cell line-derived neurotrophic factor receptor (GDNFR) family of proteins. The encoded preproprotein is proteolytically processed to generate the mature receptor. Glial cell line-derived neurotrophic factor (GDNF) and neurturin (NTN) are two structurally related, potent neurotrophic factors that play key roles in the control of neuron survival and differentiation. This receptor is a glycosylphosphatidylinositol (GPI)-linked cell surface receptor for both GDNF and NTN, and mediates activation of the RET tyrosine kinase receptor. This gene is a candidate gene for Hirschsprung disease. Alternative splicing results in multiple transcript variants, at least one of which encodes a preproprotein that is proteolytically processed. [provided by RefSeq, Jan 2016]

**Protein Families:** Druggable Genome

### Product images:



Coomassie blue staining of purified GFRA1 protein (Cat# TP326704). The protein was produced from HEK293T cells transfected with GFRA1 cDNA clone (Cat# [RC226704]) using MegaTran 2.0 (Cat# [TT210002]).