

## Product datasheet for **TP32669M**

### SPATA24 (NM\_194296) Human Recombinant Protein

#### Product data:

Product Type:	Recombinant Proteins
Description:	Recombinant protein of human hypothetical protein LOC202051 (LOC202051), 100 µg
Species:	Human
Expression Host:	HEK293T
Expression cDNA Clone or AA Sequence:	>RC226669 representing NM_194296 <b>Red</b> =Cloning site <b>Green</b> =Tags(s)
	 MATPLGWSKAGSGSVCLALDQLRDVIESQEELIHQLRNVMLQDENFVSKEEFQAVEKKLVEEKAAHAHT KVLAKKEEKLQFALGEVEVLSKQLEKEKLAFEKALSSVKSQVLESSKKDQLITKCNEIESHIKQEDI LNGKENEIKELQQVISQKQIFRNHMSDFRIKQQESYMAQVLDQKHKKASGTRQARSHQHPREK  <b>TRTRPLEQKLISEEDLAANDILDYKDDDDKV</b>
Tag:	C-Myc/DDK
Predicted MW:	23.4 kDa
Concentration:	>0.05 µg/µL as determined by microplate BCA method
Purity:	> 80% as determined by SDS-PAGE and Coomassie blue staining
Buffer:	25 mM Tris-HCl, 100 mM glycine, pH 7.3, 10% glycerol
Preparation:	Recombinant protein was captured through anti-DDK affinity column followed by conventional chromatography steps.
Note:	For testing in cell culture applications, please filter before use. Note that you may experience some loss of protein during the filtration process.
Storage:	Store at -80°C.
Stability:	Stable for 12 months from the date of receipt of the product under proper storage and handling conditions. Avoid repeated freeze-thaw cycles.
RefSeq:	<a href="#">NP_919272</a>
Locus ID:	202051
UniProt ID:	<a href="#">Q86W54</a>
Cytogenetics:	5q31.2



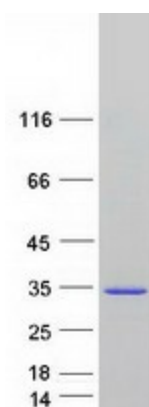
[View online »](#)

RefSeq ORF: 615

Synonyms: CCDC161; T6441

Summary: Binds DNA with high affinity but does not bind to TATA boxes. Synergises with GMNN and TBP in activation of TATA box-containing promoters and with GMNN and TBPL1 in activation of the NF1 TATA-less promoter. May play a role in cytoplasm movement and removal during spermiogenesis (By similarity).[UniProtKB/Swiss-Prot Function]

### Product images:



Coomassie blue staining of purified SPATA24 protein (Cat# [TP326669]). The protein was produced from HEK293T cells transfected with SPATA24 cDNA clone (Cat# [RC226669]) using MegaTran 2.0 (Cat# [TT210002]).