

## Product datasheet for **TP326631M**

### **NXPE2 (NM\_182495) Human Recombinant Protein**

#### Product data:

Product Type:	Recombinant Proteins
Description:	Recombinant protein of human family with sequence similarity 55, member B (FAM55B), 100 µg
Species:	Human
Expression Host:	HEK293T
Expression cDNA Clone or AA Sequence:	>RC226631 representing NM_182495 <b>Red</b> =Cloning site <b>Green</b> =Tags(s)

MVEKILIHRLTLFPNAIARKLLLMLTFILIFWIIYLASKDHTKFSFNLENHII LNQGNIFKKYSHSETP  
LCPAVSPKETELRIKDIMEKLDQQIPRPFTHVNTTTSATHSTATILNPQDTYCRGDQLDILLEVRDHLG  
HRKQYGGDFLRARMYSTALMAGASGKVTFDNNGTYLVSFTLFWEGQVSLSLLIHPSEGVSALWRARNQ  
G  
CDRIIFTGLFANRSSNVFTECGLTLNTNAELCQYMDDRDQEAFCVVRPQHMPCEALTHMTTRTRNISYLS  
KEEWRLFHRSNIGVEMMKNFTPIEVPCNKSENIKKNCQIGMKTFFPSGYTLKKMWITAFCKQIKFNETK  
NINDCLERKLIYLMGDSTLHQWIIYLQKAVKTLKYFDHHGAGIFKTHVLLDVERHILIQWKKKHGHPFVTK  
KLFSVKDENYIPREIDQVAGDKNTAIVITLQGHRFPFIPINIFIRRAINIQAIERLFLRSPETKVILKTE  
NTREIEQNAEMFSDFHGYIQNLIIRDIFVDLNVGIIDAWDMTIACTNNAHPPDYVIQNQIGMFLNYIC

**TRTRPLEQKLISEEDLAANDILDYKDDDDKV**

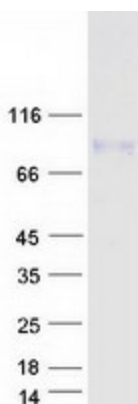
Tag:	C-Myc/DDK
Predicted MW:	64.7 kDa
Concentration:	>0.05 µg/µL as determined by microplate BCA method
Purity:	> 80% as determined by SDS-PAGE and Coomassie blue staining
Buffer:	25 mM Tris-HCl, 100 mM glycine, pH 7.3, 10% glycerol
Preparation:	Recombinant protein was captured through anti-DDK affinity column followed by conventional chromatography steps.
Note:	For testing in cell culture applications, please filter before use. Note that you may experience some loss of protein during the filtration process.
Storage:	Store at -80°C.



[View online »](#)

<b>Stability:</b>	Stable for 12 months from the date of receipt of the product under proper storage and handling conditions. Avoid repeated freeze-thaw cycles.
<b>RefSeq:</b>	<u>NP_872301</u>
<b>Locus ID:</b>	120406
<b>UniProt ID:</b>	<u>Q96DL1</u>
<b>Cytogenetics:</b>	11q23.2-q23.3
<b>RefSeq ORF:</b>	1677
<b>Synonyms:</b>	FAM55B
<b>Protein Families:</b>	Transmembrane

### Product images:



Coomassie blue staining of purified NXPE2 protein (Cat# [TP326631]). The protein was produced from HEK293T cells transfected with NXPE2 cDNA clone (Cat# [RC226631]) using MegaTran 2.0 (Cat# [TT210002]).