

Product datasheet for TP326570M

TTL11 (NM_001139442) Human Recombinant Protein

Product data:

Product Type:	Recombinant Proteins
Description:	Recombinant protein of human tubulin tyrosine ligase-like family, member 11 (TTL11), transcript variant 1, 100 µg
Species:	Human
Expression Host:	HEK293T
Expression cDNA	>RC226570 representing NM_001139442
Clone or AA Sequence:	Red=Cloning site Green=Tags(s)

MAAAASVTGRVTWAASPMRSLGLGRRLSLPGPRLDAVTA AVNPSLSDHGNGLGRGTRGSGCSGGSLVADW
GGGAAAAAVALALAPALSTMRRGSSELAARWEAEAVAAKAAKAEAEATAETVAEQVRVDAGAAGE
PECKAGEEQPKVLAPAPAQPSAAEEGNTQVLQRPPTLPSPKPKPVQGLCPHGKPRDKGRSCKRSSGHGS
GENGSQRPVTVDSSKARTSLDALKISIRQLKWKEFPFRRLPCDIYWHGVSFHDNDIFSGQVNFPGMTE
MVRKITLSRAVRTMQNLFPEEYNFYPRSWILPDEFQLFVAQVQMVKDDDPKPTFIVKPDGGCQGDGIY
LIKDPSDIRLAGTLQSRPAVVQEYICKPLLIDKLFDIRLYVLLKSLDPLEIYIAKDGLSRFCTEPYQEP
TPKNLHRIFMHLTNYSLNIHSGNFIHSDSASTGSKRTFSSILCRLSSKGVDIKKVWSDIISVIKTVIAL
TPELVFYQSDIPTGRPGPTCFQILGFDILLMKNLKPILLEVNANPSMRIEHEHELSPGVFENVPSLVDE
EVKVAVIRDTLRLMDPLKKKRENQSQQLEKPFAGKEDALDGELTSAPDCNANPEAHLPSICLKQVFPKYA
KQFNYLRLVDRMANLFIKGTMLKLGPTGFRTFIRSKLSSSSLSMAAVDILYIDITRRWNSMTLDQ
RDSGMCLQAFVEAFFLAQRKFKMLPLHEQVASLIDLCEYHLSLLDEKRLVCGRGVPSGGRPPHRGPPQE
PSPSAQPAGDNPPPRTSCANKLSHPRHTLS

SGPTRRRLEQKLISEEDLAANDILDYKDDDDKV

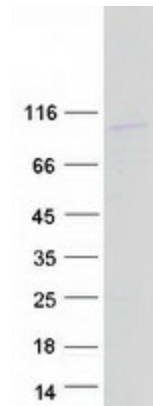
Tag:	C-Myc/DDK
Predicted MW:	87.4 kDa
Concentration:	>0.05 µg/µL as determined by microplate BCA method
Purity:	> 80% as determined by SDS-PAGE and Coomassie blue staining
Buffer:	25 mM Tris-HCl, 100 mM glycine, pH 7.3, 10% glycerol
Preparation:	Recombinant protein was captured through anti-DDK affinity column followed by conventional chromatography steps.



[View online »](#)

Note:	For testing in cell culture applications, please filter before use. Note that you may experience some loss of protein during the filtration process.
Storage:	Store at -80°C.
Stability:	Stable for 12 months from the date of receipt of the product under proper storage and handling conditions. Avoid repeated freeze-thaw cycles.
RefSeq:	NP_001132914
Locus ID:	158135
UniProt ID:	Q8NHH1 , Q6ZUZ3
Cytogenetics:	9q33.2
RefSeq ORF:	2400
Synonyms:	bA244O19.1; C9orf20
Summary:	Polyglutamase which preferentially modifies alpha-tubulin. Involved in the side-chain elongation step of the polyglutamylation reaction rather than in the initiation step (By similarity). Required for CCSAP localization to both spindle and cilia microtubules (PubMed:22493317). Generates long side-chains (By similarity).[UniProtKB/Swiss-Prot Function]

Product images:



Coomassie blue staining of purified TLL11 protein (Cat# [TP326570]). The protein was produced from HEK293T cells transfected with TLL11 cDNA clone (Cat# [RC226570]) using MegaTran 2.0 (Cat# [TT210002]).