

Product datasheet for TP326540M

SEC14L1 (NM_001143999) Human Recombinant Protein

Product data:

Product Type:	Recombinant Proteins
Description:	Recombinant protein of human SEC14-like 1 (<i>S. cerevisiae</i>) (SEC14L1), transcript variant 4, 100 µg
Species:	Human
Expression Host:	HEK293T
Expression cDNA Clone or AA Sequence:	>RC226540 protein sequence Red =Cloning site Green =Tags(s)

MVQKYQSPVRVYKYPFELIMAAYERRFPTCLIPMFVGS DTVNEFKSEDGAIHVIERRCKLDVDAPRLK
 KIAGVDYVYFVQKNSLNSRRTLHIEAYNETFSNRVIINEHCCYTVHPENEDWTCFEQSASLDIKSFFGF
 ESTVEKIAMKQYTSNIKKGKEIEYLRQLEEEGITFVPRWSPSITPSSETSSSSSKQAASMAVVIPE
 AALKEGLSGDALSSPSAPEPVVGT PDDKLDADYIKRYLGDLTPLQESCLIRLRQWLQETHKGKIPKDEHI
 LRFLRARDFNIDKAREIMCQSLTWKQHQVDYILETWTPPQVLQDYAGGWHHHDKDGRPLYVLR LGQ
 MD
 TKGLVRALGEEALLRYVLSINEEGLRRCEENTKVFGRPISWTCLVDLEGLNMRHLWRPGVKALLRIIEV
 VEANYPETLGRLLILRAPRVFPVLWTLVSPFIDNTRRKFLIYAGNDYQGPGGLLDYIDKEIIPDFLSGE
 CMCEVPEGGLVPKSLYRTAELENE DLKLWTETIYQSASVFKGAPHEILIQIVDASSVITWDFDVCKGDI
 VFNIYHSKRSPQPPKKDSLGAHSITSPGGNNVQLIDKVWQLGRDYSMVESPLICKEGESVQGS HVTRWPG
 FYILQWKFHSMPCAASSLPVDDVLASLQVSSHCKKVMYYTEVIGSEDFRGSMTSLESSHSGFSQLSAA
 TTSSSQSHSSSMISR

TRTRPLEQKLISEEDLAANDILDYKDDDDKV

Tag:	C-Myc/DDK
Predicted MW:	81.1 kDa
Concentration:	>0.05 µg/µL as determined by microplate BCA method
Purity:	> 80% as determined by SDS-PAGE and Coomassie blue staining
Buffer:	25 mM Tris-HCl, 100 mM glycine, pH 7.3, 10% glycerol
Preparation:	Recombinant protein was captured through anti-DDK affinity column followed by conventional chromatography steps.



[View online »](#)

Note: For testing in cell culture applications, please filter before use. Note that you may experience some loss of protein during the filtration process.

Storage: Store at -80°C.

Stability: Stable for 12 months from the date of receipt of the product under proper storage and handling conditions. Avoid repeated freeze-thaw cycles.

RefSeq: [NP_001137471](#)

Locus ID: 6397

UniProt ID: [Q92503](#)

RefSeq Size: 5542

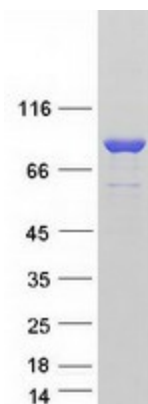
Cytogenetics: 17q25.2-q25.3

RefSeq ORF: 2145

Synonyms: PRELID4A; SEC14L

Summary: The protein encoded by this gene belongs to the SEC14 cytosolic factor family. It has similarity to yeast SEC14 and to Japanese flying squid RALBP which suggests a possible role of the gene product in an intracellular transport system. Multiple alternatively spliced transcript variants have been found for this gene; some variants represent read-through transcripts that include exons from the upstream gene C17orf86. [provided by RefSeq, Feb 2011]

Product images:



Coomassie blue staining of purified SEC14L1 protein (Cat# [TP326540]). The protein was produced from HEK293T cells transfected with SEC14L1 cDNA clone (Cat# [RC226540]) using MegaTran 2.0 (Cat# [TT210002]).