

## Product datasheet for **TP326456L**

### Dysferlin (DYSF) (NM\_001130987) Human Recombinant Protein

#### Product data:

Product Type:	Recombinant Proteins
Description:	Recombinant protein of human dysferlin, limb girdle muscular dystrophy 2B (autosomal recessive) (DYSF), transcript variant 1, 1 mg
Species:	Human
Expression Host:	HEK293T



[View online »](#)

Expression cDNA Clone >RC226456 representing NM\_001130987  
 or AA Sequence: **Red**=Cloning site **Green**=Tags(s)

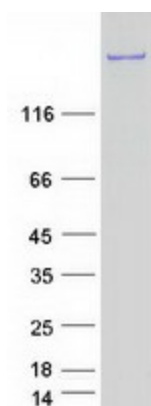
MLCCLLVRASNLPSAKKDRRSDPVASLTFRGVKKRRTKVIKNSVNPVWNEGFWDLKGIPLDQGSELHVV  
 KDHETMGRNRFLGEAKVPLREVLATPSLSASFNAPLLDTKKQPTGASLVLQVSYTPLPGAVPLFPPPTPL  
 EPSPTLPDLWVAGGGQSRAETWSLLSDSTMDTRYSGKKWPAPDTGGEEDTEDQGLTGDEAEPFLDQSG  
 GPGAPTTPRKLPSPPPHYPGIKRKRSAPTSRLKLSDKPQDFQIRVQVIEGRQLPGVNIKPVVKVTAAGQ  
 TKRTRIHKGN SPLNETLFFNLFDSPGELFDEPIFITVDSRSLRTDALLGEFRMDVGTIYREPRHAYLR  
 KWLLSDPDDFSAGARGYLKTSCLVLPVLPVDEAPLERKDPSEDKEDIESNLLRPTGVALRGAHFCLKVFR  
 EDLPQMDDAVMDNVKQIFGFESNKKNLVDPFVEVSFAGKMLCSKILEKTANPQWNQNLTPAMFSPMCEK  
 MRIRIIDWDRLTHNDIVATTYLSMSKISAPGGEIEVDDYLGFLLPTFGPCYINLYGSPREFTGFPDPYTEL  
 NTGKGEVAVYRGRLLSLETKLVEHSEQKVEDLPADDILRVEKYLRRRKYSLFAAFYSATMLQDVDDAIQ  
 FEVSIGNYGNKFDMTCLPLASTTQYSRAVFDGCHYYLPWGNVVKPVVLLSSYWEDISHRIETQNQLLGI  
 DRLEAGLEQVHLAKAQCSTEDVDSLVAQLTDELIAGCSQPLGDIHETPSATHLDQYLYQLRTHHLSQIT  
 EAALAKLGHSELPAALEQAEDWLLRLRALAEEPQNSLPDIVIWMQLQGDKRVAQYRPAHQVLFSSRRGAN  
 YCGKNCGLQTIKYPMEKVPGARMPVQIRVKLWFGLSVDEKEFNQFAEGKLSVFAETYENETKLALVG  
 NWGTTGLTYPKFSVDVTGKIKLPKDSFRPSAGWTWAGDWFVCPKLLHDMDAGHLSFVEEVFENQTRLPG  
 GQWIYMSDNYTDVNGEKVLPKDDIECPLGWKWEDEEWSTDLNRAVDEQGWESITIPPERKPKHWVPAEK  
 MYYTHRRRRWVRLRRRDLQMEALKRHRQAEAEGEGWEYASLFGWKFHLEYRKTDAFRRRRWRRRRMEPLE  
 KTGPAAVFALEGALGGVMDDKSEDSMSVSTLSFGVNRPTISCIFDYGNRYHLRCYMYQARDLAAMDKDSF  
 SDPYAIVSFLHQSQKTWVKNTLNPTWDQTLIFYEIEIFGEPATVAEQPPSIVELYDHDYGADEFMGR  
 CICQPSLERMPRLAWFPLTRGSQPSGELLASFELIQREKPAIHHPGFVQETSRIKDESEDLDLPPPPP  
 QREANIYMPQNIKPALQRTAIEILAWGLRNMKSYQLANISSPSLVVECGGQTVQSCVIRNLRKPNPFDI  
 CTLFMEVMLPREELYCPPITVKVIDNRQFGRRPVVGQCTIRSLESFLCDPYSAESPPQGGPDDVSLSP  
 GEDVLIDIDDKELIPIQLADGLSSLAPTNTASPPSSPHEEFDWWSKFFASIGEREKCGSYLEKDFDT  
 LKVYDTQLENVEAFEGLSDFCNTFKLYRGKTQEETEDPSVIGEFKGLFKIYPLPEDPAIPMPRQFHQLA  
 AQGPQECLVRIYVRAFGLQPKDPNGKCDPYIKISIGKKSVDQDNYIPCTLEPVFGKMFELTCTLPLEK  
 DLKITLYDYDLLSKDEKIGETVVDLENRLLSKFGARGLPQTYCVSGPNQWRDQLRPSQLLHLFCQQHRV  
 KAPVYRTDRVMFQDKEYSIEEIEAGRIPNPHLGPVEERLALHVLQQGLVPEHVESRPLYSPLQPDIEQG  
 KLQMWVDLFPKALGRPGPPFNITPRRARRFFLRCCIWNTRDVILDDLSLTGEKMSDIYVKGWMIGFEEHK  
 QKTDVHYRSLGGEGNFWRFIFPFDYLPAEQVCTIAKKDAFWRLDKTESKIPARVVFQIWDNDKFSFDDF  
 LGSLQLDLNRMKPAKAKKCSLDQLDDAFHPEWVSLFEQKTVKGWVPCVAEEGEKKILAGKLEMTLEI  
 VAESEHEERPAGQGRDEPNMNPKLEDPRRPDTSFLLWFTSPYKTMKFIWRRFRWAILFIILLFLA  
 IFIYAFPNYAAMKLVKPF

**TRTRPLEQKLISEEDLAANDILDYKDDDDKV**

**Tag:** C-Myc/DDK  
**Predicted MW:** 241.2 kDa  
**Concentration:** >0.05 µg/µL as determined by microplate BCA method  
**Purity:** > 80% as determined by SDS-PAGE and Coomassie blue staining  
**Buffer:** 25 mM Tris-HCl, 100 mM glycine, pH 7.3, 10% glycerol

<b>Preparation:</b>	Recombinant protein was captured through anti-DDK affinity column followed by conventional chromatography steps.
<b>Note:</b>	For testing in cell culture applications, please filter before use. Note that you may experience some loss of protein during the filtration process.
<b>Storage:</b>	Store at -80°C.
<b>Stability:</b>	Stable for 12 months from the date of receipt of the product under proper storage and handling conditions. Avoid repeated freeze-thaw cycles.
<b>RefSeq:</b>	<a href="#">NP_001124459</a>
<b>Locus ID:</b>	8291
<b>UniProt ID:</b>	<a href="#">O75923</a>
<b>Cytogenetics:</b>	2p13.2
<b>RefSeq ORF:</b>	6357
<b>Synonyms:</b>	FER1L1; LGMD2B; LGMDR2; MMD1
<b>Summary:</b>	The protein encoded by this gene belongs to the ferlin family and is a skeletal muscle protein found associated with the sarcolemma. It is involved in muscle contraction and contains C2 domains that play a role in calcium-mediated membrane fusion events, suggesting that it may be involved in membrane regeneration and repair. In addition, the protein encoded by this gene binds caveolin-3, a skeletal muscle membrane protein which is important in the formation of caveolae. Specific mutations in this gene have been shown to cause autosomal recessive limb girdle muscular dystrophy type 2B (LGMD2B) as well as Miyoshi myopathy. Alternative splicing results in multiple transcript variants. [provided by RefSeq, Aug 2008]
<b>Protein Families:</b>	Transmembrane

### Product images:



Coomassie blue staining of purified DYSF protein (Cat# [TP326456]). The protein was produced from HEK293T cells transfected with DYSF cDNA clone (Cat# [RC226456]) using MegaTran 2.0 (Cat# [TT210002]).