

## Product datasheet for TP326391L

### PRAGMIN (PRAG1) (NM\_001080826) Human Recombinant Protein

#### Product data:

**Product Type:** Recombinant Proteins  
**Description:** Recombinant protein of human homolog of rat pragma of Rnd2 (PRAGMIN), 1 mg  
**Species:** Human  
**Expression Host:** HEK293T  
**Expression cDNA Clone or AA Sequence:** >RC226391 representing NM\_001080826  
Red=Cloning site Green=Tags(s)

MHQTLCCLNPESLKMSACSDFVEHIWKPGSCKNCFCLRSDHQLVAGPPQPRAGSLPPPPRLPPRPENCRLE  
 DEGVNSSPYKPTIAVKPTMMSSEASDVWTEANLSAEVSQVIWRRAPGKLLPKQEDAPVVYLGSFRGVQ  
 KPAGPSTSPDGNSRCPAYTMVGLHNLEPRGERNIAFHPVSFPEEKAVHKEKPSFPYQDRPSTQESFRQK  
 LAAFAGTTSFGCHQGPGLRESLPSSEDDSDQRCSPSGDSEGGYCSILDCCPGSPVAKAASQTAGSRGRHG  
 GRDCSPTCWEQKCSGPAEQEKRGPSFPKECCSQGPTAHPSCCLGPKKLSLTSEAAISSDGLSCGSGSGSG  
 ASSPFVPHLESYCSLMKEPAPEKQQDPGCPGVTPSRCLGLTGEPQPPAHPREATQPEPIYAESTKRKKA  
 APVPSKSQAKIEHAAAAQGGQVCTGNAWAQAASGWGRDSPDTPQVSATITVMAAHPEEDHRTIYLS  
 PDSAVGVQWPRGPVSNSEVGEETSAGQGLSSRESHASASESKKERPAIPPKLSKSSPVGSPVPSA  
 GGPPVSPDLADLSDGSSGSSIGPQPPSQGPADPAPSCRTNGVAISDPSRCPQPAASSASEQRRPRFQAGT  
 WSRQCRIEEEEVEQELLSHWSWGRETKNGPTDHSNSTTWHRLHPTDGSSGQNSKVGTGMSKSASFAFEFP  
 KDRSGIETFSPPPPPKSRHLLKMNKSSSDLEKVSQGSASLSPSFRGVHVSFTTGSTDSLASDSRTCS  
 GGPSELAHSPTNSGKLFAPVPFSGSTEDVSPSGPQQPPPLPQKKIVSRAASSPDGFFWTQGGSPKPGT  
 ASPKLNLSHSETNVHDESHFSYSLSPGNRHHPVFSSSDPLEKAFKSGHWLPAAGLAGNRGGCGSPGLQC  
 KGAPSASSQLSVSSQASTGSTQLQLHGLLSNISSKEGTAKLGGLYTQSLARLVAKCEDLFMGGQKKEL  
 HFNENNWSLFLKTCNKPCDSGDAIYYCATCEDPGSTYAVKICKAPEPKTVSYCSPSPVPHFNIQQDCG  
 HFVASVPSSMLSSPDAPKDPVPALPHTPPAQEQDCVVITREVPHTASDFVRDSAASHQAEPAYERRV  
 CFLLLQLCNGLEHLKEHGIIHRDLLENLLLHVHCTLQAGPGPAPAPAPAAAAAPPSSAAPPAGGTLSP  
 AAGPASPEGPREKQLPRLIISNFKAKQKPGGTPNLQKKSQARLAPEIVSASQYRKFDEFQTGILYEL  
 LHQPNPFVRAQLRERDYRQEDLPPLPALSLYSPGLQLLAHLLLEADPIKRIRIGEAKRVLQCLLWGP  
 ELVQQPGTSEEALCGTLHNWIDMKRALMMMKAFAEKAVDRRRGVELEDWLCCQYLASAEPGALLQSLKLLQ  
 LL

TRTRPLEQKLISEEDLAANDILDYKDDDDKV

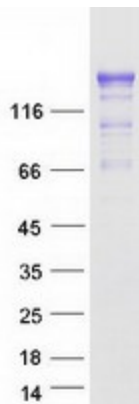
**Tag:** C-Myc/DDK  
**Predicted MW:** 149.1 kDa



[View online >](#)

<b>Concentration:</b>	>0.05 µg/µL as determined by microplate BCA method
<b>Purity:</b>	> 80% as determined by SDS-PAGE and Coomassie blue staining
<b>Buffer:</b>	25 mM Tris-HCl, 100 mM glycine, pH 7.3, 10% glycerol
<b>Preparation:</b>	Recombinant protein was captured through anti-DDK affinity column followed by conventional chromatography steps.
<b>Note:</b>	For testing in cell culture applications, please filter before use. Note that you may experience some loss of protein during the filtration process.
<b>Storage:</b>	Store at -80°C.
<b>Stability:</b>	Stable for 12 months from the date of receipt of the product under proper storage and handling conditions. Avoid repeated freeze-thaw cycles.
<b>RefSeq:</b>	<a href="#">NP_001074295</a>
<b>Locus ID:</b>	157285
<b>UniProt ID:</b>	<a href="#">Q86YV5</a>
<b>Cytogenetics:</b>	8p23.1
<b>RefSeq ORF:</b>	4206
<b>Synonyms:</b>	NACK; PEAK2; PRAGMIN; SGK223
<b>Summary:</b>	This gene encodes an enzyme that belongs to the tyrosine protein kinase family. A similar protein in rat binds to Rho family GTPase 2 (Rnd2) and regulates neurite outgrowth via activation of Ras homolog gene family, member A (RhoA). [provided by RefSeq, Mar 2014]
<b>Protein Families:</b>	Protein Kinase

### Product images:



Coomassie blue staining of purified PRAG1 protein (Cat# [TP326391]). The protein was produced from HEK293T cells transfected with PRAG1 cDNA clone (Cat# [RC226391]) using MegaTran 2.0 (Cat# [TT210002]).